



WORLD-CLASS CEMENT-BASED PUTTY



RAMCO
SUPER
FINE

CEMENT-BASED PUTTY

Ramco Super Fine wall putty is a construction material used for smoothening and leveling the surface of walls before painting. This white cement-based powder, containing binders, fillers and polymers, effectively fills cracks, holes, and surface imperfections, ensuring a smooth canvas.

It's adhesive properties are instrumental in promoting better paint adhesion to walls, elevating both the longevity and finish of the paint job. It is easy to apply and can be sanded for a flawless finish.

It actively prevents paint peeling or flaking, contributing to the long-term structural integrity of painted surfaces.





Prevent
your
expensive
Paints
from
cracking,
flaking
and
peeling off !



Advantages

Surface Smoothing

Ramco Super Fine fills cracks and imperfections for a polished look.

Enhanced Adhesion

Improves the adhesion of paint/wallpaper, ensuring durability.

Longevity Assurance

Provides a sturdy foundation, reducing the risk of chipping or peeling.

Versatility

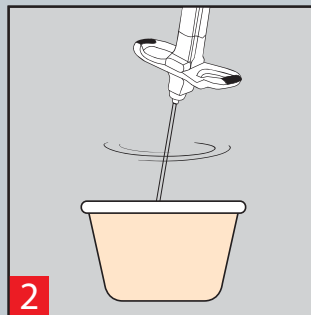
Works on various surfaces like concrete and plaster.

For internal & external usage

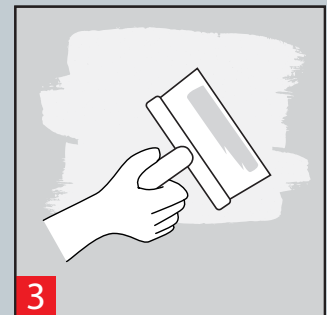
Directions for use



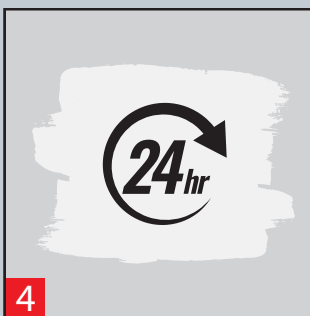
Mix Ramco Super Fine (40 Kg) with 14-15 ltrs of water



Stir well using a mechanical mixer



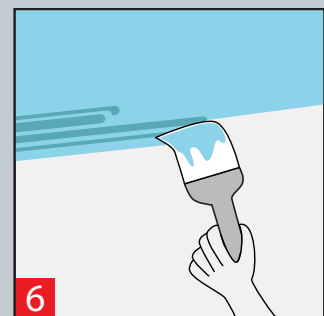
Apply putty on the wall surface



Allow it to dry for 24 hours



Sand the surface for smoother finish



Proceed with painting

Technical Specifications

Appearance (by visual observation)	White colour powder
Water to Powder ratio (as per the required workable consistency)	35 - 37%
Pot Life	60 Minutes
Bond Strength/ Adhesion Strength at 28 Day (MPa)	1.5 - 1.7
Whiteness test by Spectrophotometer analysis	95 - 100%
Coverage Area @ 2 coats	200 sqft per 40 kg bag



Right Products **for** Right Applications



*For all concrete-making cements excluding Ramco Supercrete - not required hence do not add it.

Toll Free No: 1800 425 5700
www.ramcocements.in

RAMCO
CEMENT