

THE RAMCO CEMENTS LIMITED

ISO 9001 ISO 14001 ISO 45001 ISO 50001
Certified Company

Kumarasamy Raja Nagar – 521457
Jaggayyapet Mandal, Krishna District,
Andhra Pradesh, India
Phone: 08654 224400-04
Fax: 08654 222352
E-mail: mcljpm@ramcocements.co.in

RCL/MoEF&CC/48/2024-2025

20th November 2024

Ministry of Environment, Forests and Climate Change,
Integrated Regional Office,
Green House Complex,
Gopala Reddy Road,
VIJAYAWADA – 520 010.

Respected Sir,

Sub: Submission of half yearly Compliance Report for Environmental Clearance issued for our Cement Plant, Thermal Power Plant & Waste Heat Recovery System for the period – April 2024 to September 2024 - Reg.

Ref: 1. EC Order Lr. No. J-11011/403/2006-IA-II (I) dated 18.12.2019 and its amendment vide Lr. No. J-11011/403/2006/IA.II(I) dated 15.07.2020.
2. EC Order Lr. No. J-11011/403/2006-IA-II (I) dated 29.09.2016.
3. EC Order No. J-11011/403/2006-IA II (I) dated 09.06.2009.
4. EC Order No. J-11011/403/2006-IA-II (I) dated 07.02.2007.

We herewith submit the half yearly Compliance Reports for the above cited Environmental Clearance letters & EC amendment order issued for our Cement Plant, Thermal Power Plant & Waste Heat Recovery System for the period April 2024 to September 2024 along with relevant enclosures.

This is to submit that the undersigned is the person in-charge of environmental division. Vide Notice from MoEF&CC, Chennai dated 13.08.2019, this copy of half-yearly compliance report is mailed to ecompliance-ap@gov.in.

This is for your kind information and perusal please.

Thanking you,

Yours faithfully,
for The Ramco Cements Limited,

ASHISH KUMAR SRIVASTAVA
President (Mfg.)
Phone No. 08654 224400 - 04,
Fax No. 08654 – 222352,
e-mail: mcljpm@ramcocements.co.in.

Encl.: As above.

Cc to: Central Pollution Control Board, No. 77A, 2nd Floor, South Avenue Road, Ambattur Industrial Estate, Chennai – 600 058.

HALF-YEARLY COMPLIANCE REPORT

Environmental Clearance Letter/s No. and Date	J-11011/403/2006-IA-II (I) and 18.12.2019
Name of the Project	The Ramco Cements Limited - Plant: <ul style="list-style-type: none"> • Clinker - 4.685 Million TPA, • Cement - 3.65 Million TPA, • Captive Thermal Power Plant – 24 MW, • Waste Heat Recovery Boilers - 27 MW, • Standby DG sets – 4 MW.
Period of Compliance Report	April 2024 to September 2024

A. Specific Conditions:

S. No.	Condition	Compliance Status
i.	Emissions from bag filter should be below 10 mg/Nm ³ .	Being complied. <ul style="list-style-type: none"> • Ministry accorded EC amendment order No. J-11011/403/2006-IA-II (I) dated 15.07.2020 modifying this condition as 'the emission from bag filter should be below 20 mg/Nm³. • Accordingly, all the bag filters for the cement plant Line – III are designed and being operated for the PM emission standard of 20 mg/Nm³, accordingly.
ii.	CER activities shall be implemented within 2 years.	Being complied. <ul style="list-style-type: none"> • The CER commitment for the expansion proposal is Rs. 5.0 crore. • Some of the projects are in progress.
iii.	No groundwater shall be abstracted for industrial activities.	Being complied. <ul style="list-style-type: none"> • No ground water is being used for industrial activities. • Obtained NOC from Panchayat Raj & Rural Development department, Government of Andhra Pradesh (nodal agency for Central Ground Water Authority) to utilize mine seepage water for 7000 kLD, vide Lr. No. PRR05-11028/45/2018-SLNA-GIS-CORD dated 13.11.2021, which is valid up to 12.11.2024. Renewal application submitted on 23.08.2024.

General Conditions:

B. Statutory compliance:

S. No.	Condition	Compliance Status
i.	The project proponent shall obtain forest clearance under the provisions of Forest Conservation) Act, 1986, in case of diversion of forest land for non-forest purpose involved in the project	Not applicable, as no diversion of forest land for non-forest purpose is involved in the project.
ii.	The project proponent shall obtain	Noted.

S. No.	Condition	Compliance Status
	clearance from the National Board of Wildlife, if applicable.	<ul style="list-style-type: none"> • Wildlife conservation plan prepared for Schedule - I species and submitted to Chief Wildlife Warden, Govt. of A.P, Forest Department. • Accordingly, The Prl. Chief Conservator of Forests & Chief Wild Life Warden, Government of Andhra Pradesh has approved the Wild Life Conservation plan vide letter No. 21024/19/2022/ WL-2 dated 11.07.2024. The same is being implemented for conservation of Schedule - I species.
iii.	The project proponent shall prepare a Site-Specific Conservation Plan & Wildlife Management Plan and approved by the Chief Wildlife Warden. The recommendations of the approved Site-Specific Conservation Plan / Wildlife Management Plan shall be implemented in consultation with the State Forest Department. The implementation report shall be furnished along with the six-monthly compliance report (in case of the presence of Schedule – I species in the study area).	<p>Noted.</p> <ul style="list-style-type: none"> • Wildlife conservation plan prepared for Schedule - I species and submitted to Chief Wildlife Warden, Govt. of A.P, Forest Department. • Accordingly, The Prl. Chief Conservator of Forests & Chief Wild Life Warden, Government of Andhra Pradesh has approved the Wild Life Conservation plan vide letter No. 21024/19/2022/ WL-2 dated 11.07.2024. The same is being implemented for conservation of Schedule - I species.
iv.	The project proponent shall obtain Consent to Establish / Operate under the provisions of Air (Prevention & Control of Pollution) Act, 1981 and the Water (Prevention & Control of Pollution) Act, 1974 from the concerned State Pollution Control Board / Committee	<p>Being complied.</p> <ul style="list-style-type: none"> • Obtained Consent to Establish for the project from AP Pollution Control Board vide Order No. 253/APPCB/CFE/RO-VJA/HO/2009 dated 17.10.2019. • Obtained Consent for Operation for the project AP Pollution Control Board vide Order No. APPCB/VJA/VJA/488/HO/CFO/2017- dated 28.07.2021. • Obtained Combined Consent for Operation vide order No. APPCB/VJA/VJA/488/HO/CFO/2017- dated 02.11.2021 (which is valid up to 31.01.2027), withdrawing the CFO order dated 28.07.2021.
v.	The project proponent shall obtain the necessary permission from the Central Ground Water Authority, in case of drawl of ground water / from the competent authority concerned in case of drawl of surface water	<p>Being complied.</p> <ul style="list-style-type: none"> • Panchayat Raj & Rural Development department, Government of Andhra Pradesh (nodal agency for Central Ground Water Authority) has given NOC for mine seepage water utilization for 7000 kLD,

S. No.	Condition	Compliance Status
	required for the project.	<p>vide Lr. No. PRR05-11028/45/2018-SLNA-GIS-CORD dated 13.11.2021, which is valid up to 12.11.2024. Renewal application submitted on 23.08.2024.</p> <ul style="list-style-type: none"> No surface water is being abstracted for industrial activities.
vi.	The project proponent shall obtain authorization under the Hazardous and other Waste Management Rules, 2016 as amended from time to time.	<p>Being complied.</p> <ul style="list-style-type: none"> Hazardous waste authorization obtained vide Order No. APPCB/VJA/VJA/488/HO/CFO/2017- dated 02.11.2021 which is valid up to 31.01.2027. Vide CTO & HWA Amendment Order No. APPCB/VJA/VJA/488/CTO/HO/2019- dated 30.11.2022, number of hazardous wastes are permitted for co-processing in kilns.
I.	Air quality monitoring and preservation	
i.	The project proponent shall install 24x7 continuous emission monitoring system at process stacks to monitor stack emission with respect to standards prescribed in Environment (Protection) Rules, 1986 (GSR No. 612 (E) dated 25 th August, 2014 (Cement) and subsequent amendment dated 9 th May 2016 (Cement) and 10 th May 2016 (Co-processing Cement); SO 3305 (E) dated 7 th December 2015 (Thermal Power Plants) as amended from time to time and connected to SPCB and CPCB online servers and calibrate these system from time to time according to equipment supplier specification through labs recognized under Environment (Protection) Act, 1986 or NABL accredited laboratories.	<p>Being complied.</p> <p>Total 13 Nos. (including this project) of online stack monitors (12 Nos. of cement plant & 1 No. of thermal power plant) are installed and online data is being transmitted to APPCB & CPCB websites.</p>
ii.	The project proponent shall monitor fugitive emissions in the plant premises at least once in every quarter through labs recognized under Environment (Protection) Act, 1986.	<p>Being complied.</p> <ul style="list-style-type: none"> Monitoring is being carried out once in a quarter and records are being maintained. Fugitive dust monitoring data for the period from April 2024 to September 2024 is enclosed as Annexure – I.
iii.	The project proponent shall install system carryout to Continuous Ambient Air monitoring for common / criterion parameters	<p>Being complied.</p> <ul style="list-style-type: none"> Installed 3 Nos. of Continuous Ambient Air Quality Monitoring Stations at the boundary of the plant:

S. No.	Condition	Compliance Status
	<p>relevant to the main pollutants released (e.g. PM₁₀ and PM_{2.5} in reference to PM emission, and SO₂ and NO_x in reference to SO₂ and NO_x emissions) within and outside the plant area at least at four locations (one within and three outside the plant area at an angle of 120° each), covering upwind and downwind directions. (case to case basis small plants: Manual; Large plants: Continuous).</p>	<ul style="list-style-type: none"> ○ Time Office ○ Mines Office ○ Plant NW Corner ● Installed 2 Nos. of Continuous Ambient Air Quality Monitoring Stations at outside the plant: <ul style="list-style-type: none"> ○ Ravirala Limestone Mine (RF) ○ Ramco Budawada Limestone Mine (RF) ● PM₁₀ & PM_{2.5} in reference to PM emission and SO₂ & NO_x in reference to gas emissions are being monitored at the stations.
iv.	<p>The project proponent shall submit monthly summary report of continuous stack emission and air quality monitoring and results of manual stack monitoring and manual monitoring of air quality / fugitive emissions to Regional Office of MoEF&CC, Zonal Office of CPCB and Regional Office of SPCB along with six-monthly monitoring report.</p>	<p>Being complied.</p> <ul style="list-style-type: none"> ● Results of manual stack monitoring and manual ambient air quality monitoring are being submitted to Regional Office of MoEF&CC and Regional Office of SPCB along with half-yearly compliance reports. Consolidated data for the period April 2024 to September 2024 are enclosed as Annexures - II & III respectively. ● Copy of this half-yearly compliance report is forwarded to Zonal Office of CPCB. ● Total 13 Nos. (including this project) of online stack monitors (12 Nos. of cement plant & 1 No. of thermal power plant) are installed and online data is being transmitted to APPCB & CPCB websites. ● Monthly summary report on online stack emissions for the period from April 2024 to September 2024 is enclosed as Annexure - IV. ● Installed 5 Nos. of Continuous Ambient Air Quality Monitoring Stations and online data is being transmitted to APPCB website to measure PM₁₀, PM_{2.5}, SO₂ & NO_x at the following locations: <ul style="list-style-type: none"> ○ Time Office ○ Mines Office ○ Plant NW Corner ○ Ravirala Limestone Mine (RF) ○ Ramco Budawada Limestone Mine (RF)
v.	<p>Appropriate Air Pollution Control (APC) system shall be provided for all the dust generating points including fugitive dust from all</p>	<p>Being complied.</p> <ul style="list-style-type: none"> ● Following air pollution control equipment are in operation in cement plant, thermal power plant & Ramco Budawada

S. No.	Condition	Compliance Status
	vulnerable sources, so as to comply prescribed stack emission and fugitive emission standards.	<p>Limestone Mine (RF) to control process as well as fugitive emissions from all vulnerable sources, etc.:</p> <ul style="list-style-type: none"> ○ 166 Nos. of RABH / Bag Houses / Bag Filters ○ 5 Nos. of ESPs ○ 6 Nos. of Water Fogging Systems <ul style="list-style-type: none"> ● 1 No. of bag filter is in erection and commissioning stage. This will be commissioned along with associated process equipment. ● All the air pollution control equipment for cement plant Line – I and Line – II are designed for particulate emission level of 30 mg/Nm³, whereas for cement plant Line – III are designed for 20 mg/Nm³. ● All the air pollution control equipment for TPP are designed for particulate emission level of 50 mg/Nm³. ● The dust collected from APCE is being totally recycled to the respective process / storage facility. ● All conveyers are covered with GI sheets. ● To control fugitive emissions, dust extraction system with bag filter facility is provided at truck loading area. ● Fly ash and clinker being stored in silos and fly ash is unloaded / conveyed through pneumatic system. The fly ash generated from TPP is being used in the manufacturing of cement. ● Water spray system arranged around the coal stacker & reclaimer. ● Water fogging system is installed at limestone crusher hopper and at wagon tippler. ● Permanent water sprinkling system installed at mines haul road. ● In addition to this, water sprinkling is being done with truck mounted sprinklers on roads of cement plant and mines internal haul roads.
vi.	The project proponent shall provide leakage detection and mechanized bag cleaning facilities for better maintenance of bags.	<p>Being complied.</p> <ul style="list-style-type: none"> ● Bag Filter / Bag House Differential Pressure (DP) value varies in case of any major leakage / bag drop. Leaking bag is removed immediately by by-passing the respective chamber.

S. No.	Condition	Compliance Status
		<ul style="list-style-type: none"> • Bags are cleaned by placing in the chamber itself. After cleaning of the bags, bag filter doors are closed and then bag filter suction / hopper connected conveyance system is operated to clean the dust emitted at the time of cleaning.
vii.	Pollution control system in the cement plant shall be provided as per the CREP Guidelines of CPCB.	<p>Being implemented.</p> <ul style="list-style-type: none"> • Pollution control systems are provided in the cement plant as per CREP guidelines stipulated. • Compliance report for the CREP guidelines for the cement plant is enclosed as Annexure - V.
viii.	Sufficient number of mobile or stationary vacuum cleaners shall be provided to clean plant roads, shop floors, roofs, regularly.	<p>Being complied.</p> <ul style="list-style-type: none"> • 3 Nos. of road sweepers and 2 Nos. of industrial vacuum cleaners are being operated to clean plant roads, shop floors, etc., regularly. • Roof tops are cleaned regularly.
ix.	Recycle and reuse lime fines, coal fines and such other fines collected in the pollution control devices and vacuum cleaning devices in the process after agglomeration.	<p>Being complied.</p> <ul style="list-style-type: none"> • Following air pollution control equipment are in operation in cement plant, thermal power plant & Ramco Budawada Limestone Mine (RF) to control process as well as fugitive emissions from all vulnerable sources, etc.: <ul style="list-style-type: none"> ○ 166 Nos. of RABH / Bag Houses / Bag Filters ○ 5 Nos. of ESPs ○ 6 Nos. of Water Fogging Systems • 1 No. of bag filter is in erection and commissioning stage. This will be commissioned along with associated process equipment. • The dust collected from these air pollution control equipment (like lime fines, coal fines and other fines) is being recycled and reused in the respected system. • All the process equipments are being operated with sufficient vacuum pressure to keep the area clean.
x.	Ensure covered transportation and conveying of ore, coal and other raw material to prevent spillage and dust generation; Use closed bulkers for carrying fly ash;	<p>Being complied.</p> <ul style="list-style-type: none"> • All the raw material containers are not being overloaded, at the time of transportation. • All the belt conveyors (of ore, coal and other raw material) are covered with GI

S. No.	Condition	Compliance Status
		<p>sheds to prevent spillage and dust generation.</p> <ul style="list-style-type: none"> • Fly ash (brought from outside) is transported through closed bulkers and is unloaded / conveyed through pneumatic system. • The fly ash generated from TPP is conveyed through pneumatic system and is being used in cement plant.
xi.	Provide wind shelter fence and chemical spraying on the raw material stock piles; and	<p>Being complied.</p> <p>All the raw material stock piles are covered with sheds.</p>
xii.	Provide Low NOx burners as primary measures and SCR / NSCR technologies as secondary measure to control NOx emissions. Have separate truck parking area and monitor vehicular emissions at regular interval.	<p>Being complied.</p> <ul style="list-style-type: none"> • Low NOx burners and calciners are being used to control NOx emissions. • Separate truck parking area is demarcated. • Vehicular emissions are being regularly monitored by respective transporters, which are being verified.
xiii.	Efforts shall be made to reduce impact of the transport of the raw materials and end products on the surrounding environment including agricultural land by the use of covered conveyor belts / railways as a mode of transport.	<p>Being complied.</p> <ul style="list-style-type: none"> • Major portion of raw materials (including limestone) and end products (clinker & cement) is being transported through closed wagons to control dust. • All the raw material containers are not being overloaded, at the time of transportation. • All the belt conveyors being used are covered with GI sheds to prevent spillage and dust generation. • Fly ash (brought from outside) is transported through closed bulkers and is unloaded / conveyed through pneumatic system. • The fly ash generated from TPP is conveyed through pneumatic system and is being used in cement plant.
xiv.	Ventilation system shall be designed for adequate air changes as per ACGIH document for all tunnels, motor houses, cement bagging plants.	<p>Being complied.</p> <ul style="list-style-type: none"> • Motor houses are placed in open area only. • Cable tunnels are designed for adequate ventilation systems. • Cement bagging plants are connected with bag filter system.
II	Water quality monitoring and preservation	
i.	The project proponent shall install 24x7 continuous effluent	<p>Being complied.</p> <ul style="list-style-type: none"> • No process waste water generation from

S. No.	Condition	Compliance Status
	<p>monitoring system with respect to standards prescribed in Environment (Protection) Rules, 1986 (GSR No. 612 (E) dated 25th August, 2014 (Cement) and subsequent amendment dated 9th May 2016 (Cement) and 10th May 2016 (Co-processing Cement); SO 3305 (E) dated 7th December 2015 (Thermal Power Plants) as amended from time to time and connected to SPCB and CPCB online servers and calibrate these system from time to time according to equipment supplier specification through labs recognized under Environment (Protection) Act, 1986 or NABL accredited laboratories. (case to case basis small plants: Manual; Large plants: Continuous).</p>	<p>cement plant.</p> <ul style="list-style-type: none"> • Continuous Effluent Monitoring System (CEMS) is installed to monitor Thermal Power Plant Effluent Treatment Plant treated effluent. The same is connected to CPCB & APPCB servers and data is being transmitted. • Regular calibration is being done for these online effluent monitoring analyzers. • Auto garage effluents are being treated in Oil & Grease Trap. • Compiled data of Thermal Power Plant Effluent Treatment Plant treated effluent samples and Oil & Grease Trap treated effluent samples (analysis carried out by MoEF&CC approved agency) on monthly basis for the period April 2024 to September 2024 is enclosed as Annexure – VI & VII respectively.
ii.	<p>The project proponent shall monitor regularly ground water quality at least twice a year (pre and post monsoon) at sufficient numbers of piezometers / sampling wells in the plant and adjacent areas through labs recognized under Environment (Protection) Act, 1986 and NABL accredited laboratories.</p>	<p>Being complied.</p> <ul style="list-style-type: none"> • No sampling wells are located in the plant premises, as ground water is not allowed to use. • Ground water quality is being monitored twice in a year at 9 Nos. of locations in the nearby areas through external labs recognized under Environment (Protection) Act, 1986, by MoEF&CC approved agency. • Compiled data of ground water samples collected from by nearby villages (analysis carried out by MoEF&CC approved agency) for the period April 2024 to September 2024 is enclosed as Annexure – VIII.
iii.	<p>The project proponent shall submit monthly summary report of continuous effluent monitoring and results of manual effluent testing and manual monitoring of ground water quality to Regional Office of MoEF&CC, Zonal Office of CPCB and Regional Office of SPCB along with six-monthly monitoring report.</p>	<p>Being complied.</p> <ul style="list-style-type: none"> • Compiled data of Thermal Power Plant Effluent Treatment Plant treated effluent samples and Oil & Grease Trap treated effluent samples (analysis carried out by MoEF&CC approved agency) on monthly basis for the period April 2024 to September 2024 is enclosed as Annexure – VI & VII respectively. • These data are also being submitted to Regional Office of AP Pollution Control Board, Vijayawada. • Copy of this half-yearly compliance report

S. No.	Condition	Compliance Status
		<p>is forwarded to Regional Directorate (Chennai) of CPCB.</p> <ul style="list-style-type: none"> • Continuous Effluent Monitoring System (CEMS) is installed to monitor Thermal Power Plant Effluent Treatment Plant treated effluent. The same is connected to CPCB & APPCB servers and online data is being transmitted. • Monthly summary report on online effluent monitoring for the period from April 2024 to September 2024 is enclosed as Annexure - IX. • Compiled data of ground water samples collected from by nearby villages (analysis carried out by MoEF&CC approved agency) for the period April 2024 to September 2024 is enclosed as Annexure – VIII.
iv.	Adhere to 'Zero Liquid Discharge'.	<p>Being complied.</p> <ul style="list-style-type: none"> • No process effluent generation from cement manufacturing. • TPP effluent is being treated in effluent treatment plant. The wastewater from boiler blow down, DM plant regeneration, UF & RO rejects and cooling tower blow down of TPP are being neutralized in neutralization tank. • Sewage treatment plant is in operation to treat domestic sewage from colony, plant, canteen and offices. • Auto garage wash water is being treated separately at Oil & Grease Trap. • These treated effluents are used for greenbelt, water sprinkling & partially for cement plant process activities. • The excess treated waste water, if any, is being passed to ponds (around 0.5 ha & 0.15 ha) in our own lands to uplift the water table in the nearby area. • With all these measures, 'zero discharge' is being maintained.
v.	Sewage Treatment Plant shall be provided for treatment of domestic wastewater to meet the prescribed standards.	<p>Being complied.</p> <ul style="list-style-type: none"> • Sewage treatment plant is in operation to treat domestic sewage from colony, plant, canteen and offices. • Compiled analysis data of STP treated outlet samples carried out by MoEF&CC approved agency on monthly basis for the period April 2024 to September 2024 is

S. No.	Condition	Compliance Status
		enclosed as Annexure – X.
vi.	Garland drains and collection pits shall be provided for each stock pile to arrest the run-off in the event of heavy rains and to check the water pollution due to surface run off.	Being complied. Garland drains are made for stock piles.
vii.	The project proponent shall practice rainwater harvesting to maximum possible extent.	Being complied. 48 Nos. & 4 Nos. of rain water harvesting structures are made to recharge the ground water in the colony & plant respectively by September 2024.
viii.	Water meters shall be provided at the inlet to all unit processes in the cement plant.	Being complied. Water meter installed at the inlet of the plant.
ix.	The project proponent shall make efforts to minimize water consumption in the plant complex by segregation of used water, practicing cascade use and by recycling treated water.	Being complied. Various measures to use the treated waste water in the complex are as follows: <ul style="list-style-type: none"> • The wastewater from boiler blow down, DM plant regeneration, UF & RO rejects and cooling tower blow down of TPP are being neutralized in neutralization tank. Part of the treated wastewater is being used for cement plant process (nearly 500 kLD), for greenbelt and for water sprinkling purposes. • Sewage treatment plant is in operation to treat domestic sewage from colony, plant, canteen and offices. The treated sewage is being used for greenbelt and for water sprinkling purposes. • Auto garage wash water is being treated separately at Oil & Grease Trap. The treated outlet is being used for greenbelt activities. • RO plant reject water is being used for greenbelt activities. • To further reduce the water consumption in the plant, installed 27 MW waste heat recovery system boilers with air cooled condensers, thereby stopping 1 No. of coal based boiler having water cooled condenser. Water requirement is reduced from 6,788 KLD to 5,850 KLD, by this.
III	Noise monitoring and prevention	
I.	Noise level survey shall be carried as per the prescribed guidelines and report in this regard shall be submitted to Regional Officer of	Being complied. Noise monitoring is being done and data is being maintained.

S. No.	Condition	Compliance Status						
	Ministry as a part of six-monthly compliance report.							
ii.	The ambient noise levels should conform to the standards prescribed under E(P)A Rules, 1986 viz., 75 dB(A) during daytime and 70 dB(A) during night time.	Being complied. <ul style="list-style-type: none"> • Providing noise control measures including acoustic hoods, silencers, enclosures etc. at all sources of noise generation. • Efforts are made to achieve noise levels within norms. • Ambient noise levels are being monitored during day and night time and records are being maintained. 						
IV.	Energy Conservation measures							
i.	Waste heat recovery system shall be provided for kiln and cooler.	Being complied. Waste Heat Recovery Boilers are connected to Cement Plant Line – I, II & III kilns & coolers and are connected turbines of (total) 27 MW capacity, which are being in operation.						
ii.	The project proponent make efforts to achieve power consumption less than 65 units/tonne of Portland Pozzolona Cement (PPC) and 85 units/tonne for Ordinary Portland Cement (OPC) production and thermal energy consumption of 670 kCal/kg of clinker.	<ul style="list-style-type: none"> • Efforts are being maintained to achieve these. • With respect to cement plant Line – III, the power consumption is about 65 to 70 units/tonne of PPC and 85 to 88 units/tonne of OPC. The thermal energy consumption for cement plant Line – III is 720 to 740 kCal/kg of clinker. 						
iii.	Provide solar power generation on roof tops of buildings, for solar light system for all common areas, street lights, parking around project area and maintain the same regularly.	Noted. We will explore the feasibility at our plant. Solar light systems are initiated on trial basis as street lights.						
vi.	Provide the project proponent for LED lights in their offices and residential areas.	Being complied. <ul style="list-style-type: none"> • The details of providing LED lights in plant, colony & associated mines by the end of September 2024 are as follows: <table border="1"> <tbody> <tr> <td>Total LED light fittings</td> <td>12996Nos.</td> </tr> <tr> <td>Total rating of LED lights</td> <td>587674 W</td> </tr> <tr> <td>Amount invested on LED lights (new or replaced)</td> <td>Rs. 306.91 Lakh</td> </tr> </tbody> </table>	Total LED light fittings	12996Nos.	Total rating of LED lights	587674 W	Amount invested on LED lights (new or replaced)	Rs. 306.91 Lakh
Total LED light fittings	12996Nos.							
Total rating of LED lights	587674 W							
Amount invested on LED lights (new or replaced)	Rs. 306.91 Lakh							
v.	Maximize utilization of fly ash, slag and sweetener in cement blend as per BIS standards.	Being complied. <ul style="list-style-type: none"> • The fly ash consumed in the period from April 2024 to September 2024 is 86,804 Tonne. • The slag consumed in the period from April 2024 to September 2024 is 39,689.1 Tonne. 						
vi.	Maximize utilization of alternate fuels and co-processing to achieve	Being complied. <ul style="list-style-type: none"> • Obtained Consent for Operation 						

S. No.	Condition	Compliance Status
	best practice norms.	<p>amendment order from APPCB to utilize various hazardous / non-hazardous wastes as fuel in cement plant kilns as co-processing to achieve best practice norms vide order No. APPCB/VJA/VJA/488/CTO/HO/2019- dated 30.11.2022, which is valid up to 31.01.2027.</p> <ul style="list-style-type: none"> • The utilization of hazardous waste in cement plant co-processing in the period from April 2024 to September 2024 is as follows: <ul style="list-style-type: none"> ○ Liquid hazardous waste – 90.15 Tonne ○ Solid hazardous waste - 0 Tonne
V.	Waste management	
i.	Used refractories shall be recycled as far as possible.	<p>Being complied.</p> <ul style="list-style-type: none"> • Part of refractories are being reused for pavements and other areas. • Selling out the balance to the vendors.
ii.	The waste oil, grease and other hazardous shall be disposed of as per the Hazardous & Other waste (Management & Transboundary Movement) Rules, 2016.	<p>Being complied.</p> <ul style="list-style-type: none"> • Waste oil (stored in a tank of capacity 3.5 kL) along with fresh fuel is being used for kiln firing while light up & for reclaimers lubrication and / or sold to APEMCL authorized agents. • Disposing waste lead acid batteries to APPCB authorized recyclers / re-processors properly, by storing in a designated area.
iii.	Kitchen waste shall be composted or converted to biogas for further use.	<p>Being complied.</p> <ul style="list-style-type: none"> • Biogas plant is installed with generation capacity of bio-gas @ 15 kg/day. • The kitchen waste collected from colony houses, guest houses and canteen is being fed to this.
VI.	Greenbelt	
i.	Greenbelt shall be developed in an area equal to 33% of the plant area with a native tree species in accordance with CPCB guidelines. The greenbelt shall inter alia cover the entire periphery of the plant.	<p>Being complied.</p> <p>Greenbelt is developed in an area of 130.24 ha by September 2024. Emphasis is being made to maintain 130.24 ha greenbelt area in and around plant premises.</p>
ii.	The project proponent shall prepare GHG emissions inventory for the plant and shall submit the programme for reduction of the same including carbon sequestration including plantation.	<p>Noted.</p> <p>BEE has engaged M/s Confederation of Indian Industry to conduct baseline data collection and a verification audit of our plant. This audit will assess and establish the baseline for plant's Greenhouse Gas Emissions and emission intensity for FY</p>

S. No.	Condition	Compliance Status
		2023-24. The audit will also include data of 2021-2022 and 2022-2023 as well.
VII.	Public hearing and Human health issues	
i.	Emergency preparedness plan based on the Hazard identification and Risk Assessment (HIRA) and Disaster Management Plan shall be implemented.	Being complied. Emergency preparedness plan based on the Hazard Identification & Risk Assessment (HIRA) and Disaster Management Plan are being updated and implemented at regular intervals.
ii.	The PP shall carry out heat stress analysis for the workmen who work in high temperature work zone and provide Personal Protection Equipment (PPE) as per the norms of Factory Act.	Noted. <ul style="list-style-type: none"> • Heat stress analysis will be carried accordingly. • As the operations of hot work zones are through Central Control Room, workers are not engaged for these areas for longer period. • Requisite personal protection equipments are being provided as per the norms of Factory Act for the workers working at high temperature work zone.
iii.	Provision shall be made for the housing of construction labour within the site with all necessary infrastructure and facilities such as fuel for cooking, mobile toilets, mobile STP, safe drinking water, medical health care, creche etc. The housing may be in the form of temporary structures to be removed after the completion of the project.	Being complied. Separate colony with temporary structures constructed for contract workmen with all necessary infrastructure facilities such as toilets connected with septic tanks, safe drinking water, medical health care, etc.
iv.	Occupational health surveillance of the workers shall be done on a regular basis and records maintained as per the Factories Act.	Being complied. <ul style="list-style-type: none"> • Occupational health checkup is being carried for all the employees, covering lung function and sputum analysis tests also. • Occupational health surveillance programme is being carried for the employees regularly and records are being maintained. Occupational Health Centre (with qualified Occupational Health Specialist with supporting staff) is established with the following facilities: <ul style="list-style-type: none"> ○ X-ray ○ ECG ○ Spirometry (lung function test) ○ Audiometry ○ Semi-auto analyser to carryout bio-chemical tests

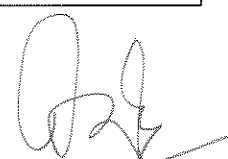
S. No.	Condition	Compliance Status
		<ul style="list-style-type: none"> ○ Clinical lab for micro-biological tests (including sputum test) ○ Checking colour blindness ○ Ambulance
VIII.	Corporate Environment Responsibility	
i.	The project proponent shall comply with the provisions contained in this Ministry's OM vide F. No. 22-65/2017-IA.III dated 1 st May 2018, as applicable, regarding Corporate Environment Responsibility.	<p>Being complied.</p> <ul style="list-style-type: none"> ● The CER commitment for the expansion proposal is Rs. 5.0 crore. ● Some of the projects are in progress.
ii.	The Company shall have a well laid down environmental policy duly approve by the Board of Directors. The environmental policy should prescribe for standard operating procedures to have proper checks and balances and to bring into focus any infringements / deviation / violation of the environmental forest / wildlife norms / conditions. The company shall have defined system of reporting infringements / deviation / violation of the environmental / forest / wildlife norms / conditions and / or shareholders / stock holders. The copy of the board resolution in this regard shall be submitted to the MoEF&CC as a part of six-monthly report.	<p>Complied.</p> <p>Final EIA report covering the following is submitted to Ministry at the time of processing of this EC:</p> <ul style="list-style-type: none"> ● Environmental Policy. ● Hierarchical system or Administrative order of the Company to deal with environmental issues and ensuring compliance to the environmental clearance conditions. ● System of reporting of non-compliance / violation environmental norms to the Board of Directors of the company and/or stakeholders or shareholders.
iii.	A separate Environmental Cell both at the project and company head quarter level, with qualified personnel shall be set up under the control of senior Executive, who will directly to the head of the organization.	<p>Being complied.</p> <ul style="list-style-type: none"> ● Separate environmental management cell is carrying out monitoring functions. ● Environmental cell with qualified personnel is set up at corporate level. ● The organization chart of environmental cell at the project area is enclosed as Annexure - XI.
iv.	Action plan for implementing EMP and environmental conditions along with responsibility matrix of the company shall be prepared and shall be duly approved by competent authority. The year wise funds earmarked for environmental protection measures shall be kept in separate account and not to be	<p>Being complied.</p> <ul style="list-style-type: none"> ● Earmarked funds for environmental protection measures so provided are not being diverted for any other purposes. ● Rs. 218 lakh spent towards the total capital cost for environmental pollution control measures at the time of modernization. ● Rs. 431 lakh spent on new air pollution

S. No.	Condition	Compliance Status
	diverted for any other purpose. Year wise progress of implementation of action plan shall be reported to the Ministry / Regional Office along with Six Monthly Compliance Report.	<p>control equipment in the financial year 2016-17 as part of the Line – I expansion project.</p> <ul style="list-style-type: none"> • Greenbelt expenditure in the financial year 2023-2024 is Rs. 102.179 lakh with respect to plant, colony, mining lease areas and nearby areas. • Rs. 2996.3547 lakh spent as recurring cost and Rs. 97.4472 lakh spent on capital cost in the financial year 2023-2024 respectively, for various environmental protection measures associated with plant & mines. • Details of expenditure for environmental protection measures are being submitted along with half-yearly compliance reports regularly. • Rs. 1611.20 lakh is allocated for Environment Management Activities for the financial year 2024-2025 towards capital & recurring costs for plant & mines and being spent.
v.	Self-environmental audit shall be conducted annually. Every three years third party environmental audit shall be carried out.	<p>Being complied.</p> <ul style="list-style-type: none"> • Soft copy of the same is being submitted to Integrated Regional Office, MoEF&CC, Vijayawada. Soft copy is also kept on the Company's website regularly. • Self environment statement in Form – V is being submitted regularly within stipulated time to the APPCB. Third party environmental audit is conducted for the financial year 2023-2024 and submitted accordingly.
vi.	All the recommendations made in the Charter on Corporate Responsibility for Environment Protection (CREP) for the Cement plants shall be implemented.	<p>Being implemented.</p> <p>Compliance report for CREP guidelines for cement plant is enclosed as Annexure - V.</p>
IX.	Miscellaneous	
i.	The Project Proponent shall make public the environmental clearance granted for their project along with environmental conditions and safeguards at their cost by prominently advertising it at least in two local newspapers of the District or State, of which one shall be in the vernacular language within	<p>Complied.</p> <ul style="list-style-type: none"> • Published the same on 31.12.2019 in The Indian Express – English & Sakshi – Telugu (vernacular language) newspapers and copy submitted to Regional Office, Ministry vide Lr. No. RCL/MoEF&CC/53/2019-20 • The order is displayed in our company's website.

S. No.	Condition	Compliance Status
	seven days and in addition this shall also be displayed in the project proponent's website permanently.	
ii.	The copies of environmental clearance shall be submitted by the project proponents to the Heads of local bodies, Panchayats and Municipal Bodies in addition to the relevant offices of the Government who in turn has to display the same for 30 days from the date of receipt.	Noted. Informed to local Panchayats.
iii.	The project proponent shall upload the status of compliance of the stipulated environment clearance conditions, including results of monitored data on their website and update the same on half-yearly basis.	Being complied. Uploading the status of compliance of the stipulated environment clearance conditions, including results of monitored data on our website and updating the same on half-yearly basis.
iv.	The project proponent shall monitor the criteria pollutants level namely; PM ₁₀ , SO ₂ , NO _x (ambient levels as well as stack emissions) or critical sectoral parameters, indicated for the projects and display the same at a convenient location for disclosure to the public and put on the website of the company.	Being complied. <ul style="list-style-type: none"> • Online monitoring of the criteria pollutants level namely; PM_{2.5}, PM₁₀, SO₂, NO_x for ambient levels as well as online monitoring of the criteria pollutants level namely; PM, SO₂, NO_x for stack emissions are being carried out. These online data are being displayed at main gate through digital display board for disclosure to the public. • Compiled data of stack monitoring data & ambient air quality monitoring data collected by MoEF&CC approved external laboratory on monthly basis for the period April 2024 to September 2024 is enclosed as Annexure – II & III respectively. • These compliance reports along with monitoring data are placed in our company's website.
v.	The project proponent shall submit six-monthly reports on the status of the compliance of the stipulated environmental conditions on the website of the Ministry of Environment, Forest and Climate Change at environment clearance portal.	Being complied. Submitting six-monthly reports on the status of the compliance of the stipulated environmental conditions on the website of the Ministry of Environment, Forest and Climate Change at environment clearance portal, regularly.
vi.	The project proponent shall submit the environmental statement for each financial year in Form-V to the concerned State Pollution Control Board as prescribed under the	Being complied. <ul style="list-style-type: none"> • Environment statement in Form – V is being submitted regularly within stipulated time to the APPCB.

S. No.	Condition	Compliance Status
	Environment (Protection) Rules, 1986, as amended subsequently, and put on the website of the company.	<ul style="list-style-type: none"> Soft copy of the same is being submitted to Integrated Regional Office, MoEF&CC, Vijayawada. Soft copy is also kept on the Company's website regularly.
vii.	The project proponent shall inform the Regional Office as well as the Ministry, the date of financial closure and final approval of the project by the concerned authorities, communicating the land development work and start of production operation by the project.	<p>Noted.</p> <ul style="list-style-type: none"> Date of financial closure for this project is not required as total funding for this project is from own funds. Consent for Operation is obtained from APPCB vide order No. APPCB/VJA/VJA/488/HO/CFO/2017- dated 02.11.2021. Vide order No. APPCB/VJA/VJA/488/HO/CFO/2017- dated 02.12.2021, validity of the same is extended to 31.01.2027.
viii.	The project authorities must strictly adhere to the stipulations made by the State Pollution Control Board and the State Government.	<p>Being complied.</p> <ul style="list-style-type: none"> Stipulations made in the corresponding Consent for Establishment order No. 253/APPCB/CFE/RO-VJA/HO/2009 dated 17.10.2019 and Combined Consent for Operation order No. APPCB/VJA/VJA/488/HO/CFO/2017- dated 02.11.2021 (which is valid up to 31.01.2026), are being be scrupulously followed. Vide order No. APPCB/VJA/VJA/488/HO/CFO/2017- dated 02.12.2021, validity of the same is extended to 31.01.2027.
ix.	The project proponent shall abide by all the commitments and recommendations made in the EIA / EMP report, commitment made during Public Hearing and also that during their presentation to the Expert Appraisal Committee.	<p>Being complied.</p> <ul style="list-style-type: none"> Regarding all the commitments and recommendations made in the EIA / EMP report, during Public Hearing and also that during our presentation to the Expert Appraisal Committee are being followed. In the public hearing, it is proposed by Hon'ble District Collector to all nearby villagers to form Village Committees in their respective villages and submit their requirements. These requests are being fulfilled by necessary budgetary allocation in phased manner, on priority basis.
x.	No further expansion or modifications in the plant shall be carried out without prior approval of the Ministry of Environment, Forests and Climate Change (MoEF&CC).	Noted and prior approval of the Ministry will be taken for further expansion or modification of the plant.
xi.	Concealing factual data or submission	Noted and being adhered to.

S. No.	Condition	Compliance Status
	of false / fabricated data may result in revocation of this environmental clearance and attract action under the provisions of Environment (Protection) Act, 1986.	
xii.	The Ministry may revoke or suspend the clearance, if implementation of any of the above conditions is not satisfactory.	Noted.
xiii.	The Ministry reserves the right to stipulate additional conditions if found necessary. The Company in a time bound manner shall implement these conditions.	Noted and being adhered to.
xiv.	The Regional Office of this Ministry shall monitor compliance of the stipulated conditions. The project authorities should extend full cooperation to the officer(s) of the Regional Office by furnishing the requisite data / information / monitoring reports.	Noted and being adhered to. Extending full cooperation to the officer(s) of the Integrated Regional Office by furnishing the requisite data / information / monitoring reports.
xv.	The above conditions shall be enforced, inter-alia under the provisions of the Water (Prevention & Control of Pollution) Act, 1974, the Air (Prevention & Control of Pollution) Act, 1981, the Environment (Protection) Act, 1986, Hazardous and Other Wastes (Management and Transboundary Movement) Rules, 2016 and the Public Liability Insurance Act, 1991 along with their amendments and Rules and any other orders passed by the Hon'ble Supreme Court of India / High Courts and any other Court of Law relating to the subject matter.	Noted. <ul style="list-style-type: none"> • Being adhered to the Water (Prevention & Control of Pollution) Act, 1974, the Air (Prevention & Control of Pollution) Act, 1981, the Environment (Protection) Act, 1986, Hazardous and Other Wastes (Management and Transboundary Movement) Rules, 2016 along with their amendments and Rules and any other orders passed by the Hon'ble Supreme Court of India / High Courts and any other Court of Law relating to the subject matter. • Public Liability Insurance Policy No. 0304008408 02 00 is taken for the financial year 2024-2025.
xvi.	Any appeal against this EC shall lie with the National Green Tribunal, if preferred, within a period of 30 days as prescribed under Section 16 of the National Green Tribunal Act, 2010.	Noted.



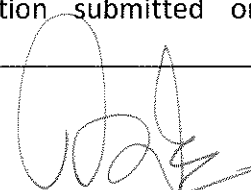
(Signature)

HALF-YEARLY COMPLIANCE REPORT

Environmental Clearance Letter/s No. and Date	J-11011/403/2006/IA.II(I) dated 15.07.2020 (amendment order)
Name of the Project	The Ramco Cements Limited - Plant: <ul style="list-style-type: none"> • Clinker - 4.685 Million TPA, • Cement - 3.65 Million TPA, • Captive Thermal Power Plant – 24 MW, • Waste Heat Recovery Boilers - 27 MW, • Standby DG sets – 4 MW.
Period of Compliance Report	April 2024 to September 2024

A. Specific Conditions:

S.No.	Condition	Compliance Status
i.	Emissions from bag filter should be below 20 mg/Nm ³	Being complied. All the bag filters for the cement plant Line – III are designed for 20 mg/Nm ³ , accordingly.
ii.	CER activities shall be implemented within 2 years.	Being complied. <ul style="list-style-type: none"> • The CER commitment for the expansion proposal is Rs. 5.0 crore. • Some of the projects are in progress.
iii.	No groundwater shall be abstracted for industrial activities.	Being complied. <ul style="list-style-type: none"> • No groundwater is being used for industrial purposes. • Obtained NOC from Panchayat Raj & Rural Development department, Government of Andhra Pradesh (nodal agency for Central Ground Water Authority) to utilize mine seepage water for 7,000 kLD, vide Lr. No. PRR05-11028/45/2018-SLNA-GIS-CORD dated 13.11.2021, which is valid up to 12.11.2024. Renewal application submitted on 23.08.2024.


 (Signature)

HALF-YEARLY COMPLIANCE REPORT

Environmental Clearance Letter/s No. and Date	J-11011/403/2006-IA-II (I) and dated 29 th September, 2016
Name of the Project	The Ramco Cements Limited – Plant: <ul style="list-style-type: none"> • Clinker – 3.185 Million TPA, • Cement - 3.65 Million TPA, • Captive Thermal Power Plant – 42 MW, • Standby DG sets – 4 MW.
Period of Compliance Report	April 2024 to September 2024

A. Specific Conditions:

S. No.	Condition	Compliance Status
i.	The project proponent shall install 24x7 air monitoring devices to monitor air emissions, as provided by the CPCB and submit report to Ministry and its Regional Office.	Being complied. <ul style="list-style-type: none"> • 13 Nos. of on-line stack monitors (24x7) are installed to monitor particulate emissions and online data on air emissions is linked up with APPCB & CPCB websites. • This is being submitted as part of this condition. • Vide Notice from MoEF&CC, Chennai dated 13.08.2019, this copy of half-yearly compliance report is mailed to ecompliance-ap@gov.in.
ii.	The Standards issued by the Ministry vide G.S.R. No. 612 (E) dated 25 th August, 2014 regarding cement plants with respect to particulate matter, SO ₂ and NO _x shall be followed.	Being complied. <ul style="list-style-type: none"> • All the air pollution control equipment for cement plant Line – I and Line – II are designed for particulate emission level of 30 mg/Nm³, whereas for cement plant Line – III are designed for 20 mg/Nm³. • As our pyritic sulphur in limestone is less than 0.25%, our SO₂ standard for Kiln – I, II & III is 100 mg/Nm³. The sulphur content is absorbed in clinker and the emission levels are well within the limit. • Low NO_x burners and low NO_x calciners are installed for Kiln – I, II & III to meet the NO_x standard of 600 mg/Nm³ for Kiln – I & III and 800 mg/Nm³ for Kiln – II respectively. • All the air pollution control equipment for TPP are designed for particulate emission level of 50 mg/Nm³, SO₂ standard of 600 mg/Nm³ and NO_x standard of 450 mg/Nm³.
iii.	Continuous stack monitoring facilities to monitor gaseous emissions from all the stacks shall be provided. After expansion limit	Being complied. <ul style="list-style-type: none"> • 13 Nos. of on-line stack monitors are installed to monitor particulate emissions and online data is being transmitted to APPCB & CPCB

S. No.	Condition	Compliance Status
	<p>of SPM shall be controlled within 50 mg/Nm³ by installing adequate air pollution control system viz., electrostatic precipitators, bag house, bag filters etc. Data on ambient air, fugitive and stack emissions shall be submitted to the Ministry's Regional Office at Bangalore, A.P. Pollution Control Board (APPCB) and CPCB regularly.</p>	<p>websites.</p> <ul style="list-style-type: none"> • All the air pollution control equipment for cement plant Line – I and Line – II are designed for particulate emission level of 30 mg/Nm³, whereas for cement plant Line – III are designed for 20 mg/Nm³. • Following air pollution control equipment are in operation in the present operating cement plant, thermal power plant & Ramco Budawada Limestone Mine (RF) to control process as well as fugitive emissions from all vulnerable sources, etc.: <ul style="list-style-type: none"> ○ 166 Nos. of RABH / Bag Houses / Bag Filters ○ 5 Nos. of ESPs ○ 6 Nos. of Water Fogging Systems • 1 No. of bag filter is in erection and commissioning stage. This will be commissioned along with associated process equipment. • Data on ambient air and stack emissions collected by MoEF&CC approved external laboratories on monthly basis (manual), is being regularly submitted to APPCB on monthly basis & half-yearly basis. • Compiled data of quarterly fugitive dust monitoring, monthly stack monitoring and monthly ambient air quality monitoring collected by MoEF&CC approved external laboratories for the period April 2024 to September 2024 is enclosed as Annexure – I, II & III respectively. The copy of the same is submitted to CPCB. • Installed 5 Nos. of Continuous Ambient Air Quality Monitoring Stations and online data is being transmitted to APPCB website.
iv.	<p>Possibilities shall be explored for the proper and full utilization of gases generated from the kiln in waste heat recovery boiler (WHRB) and a feasibility report shall be prepared and submitted to the Ministry and its Regional Office at Bangalore within 3 months from the date of issue of the letter.</p>	<p>Being complied.</p> <ul style="list-style-type: none"> • Explored the possibilities for utilization of heat from the gases generated from the kiln circuits to produce 27 MW power. • Environmental Clearance No. J-11011/403/2006-IA-II (I) dated 18.12.2019 obtained from MoEF&CC for utilization of these hot gases from 3 Nos. of Kiln circuits to produce 27 MW. • CFO for the same is also obtained and power is being generated.
v.	<p>Pet Coke can be used in the total</p>	<p>Being complied.</p>

S. No.	Condition	Compliance Status
	Coal Mix with 60 % Pet Coke and 40 % Indian Imported coal combination for Cement Plant use.	Pet coke is being used as part of this condition, for cement plant, as per latest guidelines.
vi.	A greenbelt of 130.24 ha (52.5 % of 248.08 ha) as on 30.11.2014 has been developed, which should be maintained as it is.	<p>Being complied.</p> <ul style="list-style-type: none"> • Greenbelt is developed in an area of 130.24 ha by September 2024. • Emphasis is being made to maintain 130.24 ha greenbelt area in and around plant premises.
vii.	As proposed, Electrostatic precipitators (ESPs) to clinker, bag house to kiln / raw mill, coal mill and pulse jet bag filters to cement mill and slag mill shall be provided to control gaseous emissions within 50 mg/Nm ³ . Bag filters shall also be provided at transfer points. Water sprinklers shall be provided to control dust emissions in cement plant and mine area.	<p>Being complied.</p> <ul style="list-style-type: none"> • All the air pollution control equipment for cement plant Line – I and Line – II are designed for particulate emission level of 30 mg/Nm³, whereas for cement plant Line – III are designed for 20 mg/Nm³. • All the air pollution control equipment for TPP are designed for particulate emission level of 50 mg/Nm³. • Following air pollution control equipment are in operation in the present operating cement plant, thermal power plant & Ramco Budawada Limestone Mine (RF) to control process as well as fugitive emissions from all vulnerable sources, etc.: <ul style="list-style-type: none"> ○ 166 Nos. of RABH / Bag Houses / Bag Filters ○ 5 Nos. of ESPs ○ 6 Nos. of Water Fogging Systems • 1 No. of bag filter is in erection and commissioning stage. This will be commissioned along with associated process equipment. • Installed electrostatic precipitators (ESPs) to coolers; bag houses to kilns / raw mills, coal mills, cement mill and slag mill. Bag filters are provided for additive crusher, truck loading and all packing machines. • The dust collected from APCE is being totally recycled to the respective process / storage facility. • All conveyers are covered with GI sheets. • Water spray system is arranged around the coal stacker & reclaimer. • Water fogging system is installed at limestone crusher hoppers and at wagon tippler. • Permanent water sprinkling system installed

S. No.	Condition	Compliance Status
		<p>at mines haul road.</p> <ul style="list-style-type: none"> • In addition to this, water sprinkling is being done with truck mounted sprinklers on roads of cement plant and mines internal haul roads.
viii.	<p>Ambient air monitoring shall be carried out in and around the project site and efforts shall be made to control and minimize the particulate matters to bare minimum. One ambient air quality monitoring station shall be installed in downwind direction. It shall be ensured that the ambient air quality parameters conform to the norms prescribed by the CPCB in this regard.</p>	<p>Being complied.</p> <ul style="list-style-type: none"> • 3 Nos. of ambient air quality monitoring stations (manual) are established near to plant boundary and 9 Nos. of ambient air quality monitoring stations (manual) are established in nearby villages. • Ambient air quality monitoring (manual) is being carried out by MoEF&CC approved external laboratory and efforts are being made that the ambient air quality parameters conform to the norms prescribed by the CPCB. • Compiled data of ambient air quality monitoring data collected by MoEF&CC approved external laboratory on monthly basis for the period April 2024 to September 2024 is enclosed as Annexure - III.
ix.	<p>The company shall install adequate dust collection and extraction system to control fugitive dust emissions at various transfer points, raw mill handling (unloading, conveying, transporting, stacking), vehicular movement, bagging and packing areas etc. Crusher shall be operated with high efficiency bag filters. All conveyers shall be covered with GI sheets.</p>	<p>Being complied.</p> <ul style="list-style-type: none"> • Following air pollution control equipment are in operation in the present operating cement plant, thermal power plant & Ramco Budawada Limestone Mine (RF) to control process as well as fugitive emissions from all vulnerable sources, etc.: <ul style="list-style-type: none"> ○ 166 Nos. of RABH / Bag Houses / Bag Filters ○ 5 Nos. of ESPs ○ 6 Nos. of Water Fogging Systems • 1 No. of bag filter is in erection and commissioning stage. This will be commissioned along with associated process equipment. • High efficiency bag filters are provided for LS crushers and additive crusher. Water fogging system is installed at limestone crusher hopper and at wagon tippler. • The dust collected from APCE is being totally recycled to the respective process / storage facility. • All conveyers are covered with GI sheets. • Water spray system arranged around the coal stacker & reclaimer. • Permanent water sprinkling system installed

S. No.	Condition	Compliance Status
		<p>at mines haul road.</p> <ul style="list-style-type: none"> In addition to this, water sprinkling is being done with truck mounted sprinklers on roads of cement plant and mines internal haul roads.
x.	<p>Covered sheds for storage of raw materials and fully covered conveyers for transportation of materials shall be provided besides coal, cement, fly ash and clinker shall be stored in silos. Pneumatic system shall be used for fly ash handling. Regular water sprinkling shall be carried out in critical areas prone to air pollution and having high levels of SPM and RPM particularly in mine area and other vulnerable areas.</p>	<p>Being complied.</p> <ul style="list-style-type: none"> Covered sheds for storage of raw materials and fully covered conveyers for transportation of materials are made for coal and other raw materials. Cement, fly ash and clinker are being stored in silos. Pneumatic system is being used for fly ash handling. Permanent water sprinkling system installed at mines haul road. In addition to this, water sprinkling is being done with truck mounted sprinklers on roads of cement plant and mines internal haul roads including critical areas prone to air pollution and other vulnerable areas. 3 Nos. of road sweepers and 2 Nos. of industrial vacuum cleaners are being used for dust removal. The removed / collected dust is being reused in the process, as per the quality parameters.
xi.	<p>Data on ambient air quality, stack emissions and fugitive emissions shall be regularly submitted on-line to the Ministry's Regional Office at Bangalore, Central Pollution Control Board (CPCB) and A.P. Pollution Control Board (APPCB) as well as hard copy once in six months. Data on SPM, SO₂ and NO_x shall also be displayed outside the premises at the appropriate place for the general public.</p>	<p>Being complied.</p> <ul style="list-style-type: none"> Compiled data of quarterly fugitive dust monitoring, monthly stack monitoring and monthly ambient air quality monitoring collected by MoEF&CC approved external laboratories for the period April 2024 to September 2024 is enclosed as Annexure – I, II & III respectively. The copy of the same is submitted to CPCB. This is being submitted as part of this condition. Vide Notice from MoEF&CC, Chennai dated 13.08.2019, this copy of half-yearly compliance report is mailed to ecompliance-ap@gov.in. Online data on PM, SO₂ & NO_x for the stacks and PM₁₀, PM_{2.5}, SO₂ & NO_x data for ambient air quality respectively displayed outside the premises for the general public.
xii.	<p>Asphalting / concreting of roads and water spray all around the critical areas prone to air</p>	<p>Being complied.</p> <ul style="list-style-type: none"> All major roads of the plant are paved with concrete / asphalt.

S. No.	Condition	Compliance Status
	pollution and having high levels of SPM and RPM shall be ensured.	<ul style="list-style-type: none"> • Water sprinkling is being regularly done with truck mounted sprinklers on critical areas prone to air pollution.
xiii.	Secondary fugitive emissions shall be controlled and shall be within the prescribed limits and regularly monitored. Guidelines / Code of Practice issued by the CPCB in this regard shall be followed.	<p>Being complied.</p> <ul style="list-style-type: none"> • Secondary fugitive emissions are controlled by providing air pollution control equipments, concrete roads, water sprinkling, water fogging systems, greenbelt development, regular cleaning of roads by using road sweeping machines & vacuum cleaners, etc. • Compiled data of quarterly fugitive dust monitoring collected by MoEF&CC approved external laboratories for the period April 2024 to September 2024 is enclosed as Annexure – I. • Following air pollution control equipment are in operation in the present operating cement plant, thermal power plant & Ramco Budawada Limestone Mine (RF) to control process as well as fugitive emissions from all vulnerable sources, etc.: <ul style="list-style-type: none"> ○ 166 Nos. of RABH / Bag Houses / Bag Filters ○ 5 Nos. of ESPs ○ 6 Nos. of Water Fogging Systems • 1 No. of bag filter is in erection and commissioning stage. This will be commissioned along with associated process equipment. • Guidelines / code of practice issued by the CPCB in this regard are being followed accordingly.
xiv.	Efforts shall be made to reduce impact of the transport of the raw materials and end products on the surrounding environment including agricultural land. All the raw materials including fly ash shall be transported in the closed containers only and shall not be overloaded. Vehicular emissions shall be regularly monitored.	<p>Being complied.</p> <ul style="list-style-type: none"> • Major portion of raw materials (including limestone), clinker (intermediate product) and cement (end product) are being transported through closed wagons to reduce impact of transportation on surrounding environment including agricultural lands. • Fly ash (brought from outside) is unloaded / conveyed through pneumatic system. • The fly ash generated from TPP is conveyed through pneumatic system and is used in cement plant. • All the raw material vehicles are not being overloaded, at the time of transportation.

S. No.	Condition	Compliance Status
		<ul style="list-style-type: none"> ● It is ensured that vehicular emissions are being regularly monitored by respective transporters.
xv.	<p>The wastewater from boiler blow down, DM plant regeneration waste water, UF & RO rejects shall be neutralized in neutralization tank and mixed with cooling tower blow down in a Central Monitoring Basin (CMB) and used for greenbelt development. All the treated wastewater shall be recycled and reused in the process and/or for dust suppression and greenbelt development and other plant related activities etc. No process wastewater shall be discharged outside the factory premises and 'zero' discharge shall be adopted.</p>	<p>Being complied.</p> <ul style="list-style-type: none"> ● No process effluent generation from cement manufacturing. ● TPP effluent is being treated in effluent treatment plant. The wastewater from boiler blow down, DM plant regeneration, UF & RO rejects and cooling tower blow down of TPP are being neutralized in neutralization tank. ● Sewage treatment plant is in operation to treat domestic sewage from colony, plant, canteen and offices. ● Auto garage wash water is being treated separately at Oil & Grease Trap. ● These treated effluents are used for greenbelt, water sprinkling & partially for process activities. ● The excess waste water, if any, is being passed to ponds (around 0.5 ha & 0.15 ha) in our own lands to uplift the water table nearby area. ● With all these measures, 'zero discharge' is being maintained.
xvi.	<p>Permission for the drawl of ground water / mine pit water shall be obtained from the Central Ground Water Authority / State Ground Water Board (GGWA / SGWB) and a copy of the letter shall be submitted to the Ministry's Regional Office at Bangalore within 3 months of issue of the environment clearance.</p>	<p>Being complied.</p> <p>Permission obtained from Panchayat Raj & Rural Development Department (nodal agency for Central Ground Water Department) vide Lr. No. PRR05-11028/45/2018-SLNA-GIS-CORD dated 13.11.2021, which is valid up to 12.11.2024. Renewal application submitted on 23.08.2024.</p>
xvii.	<p>All the bag filter dust, raw meal dust, coal dust, clinker dust and cement dust from air pollution control devices shall be recycled and reused in the process and used for cement manufacturing. The sludge from sewage treatment plant (STP) shall be used as manure for greenbelt development. Organic wastes shall be subjected to vermin composting and used as manure</p>	<p>Being complied.</p> <ul style="list-style-type: none"> ● All the bag filter & ESP dust, raw meal dust, coal dust, clinker dust and cement dust from air pollution control devices are being recycled totally in the respective section and reused in the cement manufacturing process. ● The sludge from sewage treatment plant (STP) is being used as manure for greenbelt development. ● Organic wastes are vermin composted and used as manure for greenbelt. ● Bio-gas plant is in operation to digest food

S. No.	Condition	Compliance Status
	for greenbelt. Inorganic wastes (papers and other wastes) shall be properly disposed off or sold to rag pickers / scrap dealers. Used oil and batteries shall be used in kiln as an alternate fuel and / or sold to authorized recyclers / reprocessors only.	<p>waste collected and the sludge from this plant is used as manure.</p> <ul style="list-style-type: none"> ● Inorganic wastes (papers and other wastes) are properly disposed into calciner of the preheater. ● Wooden and metallic scrap is being disposed to scrap dealers. ● Waste oil (stored in a tank of capacity 3.5 kL) along with fresh fuel is being used for kiln firing while light up & for reclaimers lubrication and / or sold to APEMC authorized agents. ● Disposing waste lead acid batteries to APPCB authorized recyclers / re-processors properly, by storing in a designated area.
xviii.	An effort shall be made to use of high calorific hazardous waste in the cement kiln and necessary provision shall be made accordingly.	<p>Being complied.</p> <ul style="list-style-type: none"> ● Utilizing alternate fuels for co-processing in cement kilns as per CPCB guidelines ● 2 Nos. of liquid hazardous waste tanks with necessary pumping system is made to feed into the cement kilns. ● Dedicated shed is made to store the solid hazardous waste, to blend with coal for feeding into coal mill circuits for grinding and for further feeding into the cement kilns.
xix.	Efforts shall be made to use low-grade lime, more fly ash and solid waste in the cement manufacturing.	<p>Being complied.</p> <ul style="list-style-type: none"> ● Low grade limestone is being used by blending activity. ● The fly ash consumed in the period from April 2024 to September 2024 is 86,804 Tonne. ● The slag consumed in the period from April 2024 to September 2024 is 39,689.1 Tonne.
xx.	All the fly ash shall be utilized as per Fly Ash Notification, 1999 subsequently amended in 2003. Efforts shall be made to use fly ash and slag maximum in making Pozzolona Portland Cement (PPC) and Portland Slag Cement (PSC).	<p>Being complied.</p> <ul style="list-style-type: none"> ● The fly ash generated from TPP is used in the manufacturing of cement. ● The fly ash consumed in the period from April 2024 to September 2024 is 86,804 Tonne. ● The slag consumed in the period from April 2024 to September 2024 is 39,689.1 Tonne.
xxi.	Permission and recommendations of the State Forest Department regarding impact of proposed plant on surrounding reserve forests viz. Jaggayapeta Extension RT (0.2 - 10.5 km, E-S), Budavada RF (3.2 - 10.5 km, W), Ballusupadu R1 (6 - 11 km, WNW), (Grandrayi	<p>Noted.</p> <ul style="list-style-type: none"> ● Permission obtained from Forest Department regarding impact of plant on surrounding reserve forests. ● Wildlife conservation plan prepared for Schedule - I species and submitted to Chief Wildlife Warden, Govt. of A.P, Forest Department.

S. No.	Condition	Compliance Status
	RF (8.5 - 11 km, NNW) and Kuntimaddi RF (8 km, SSE) shall be obtained and implemented. Further, Conservation Plan for the conservation of wild fauna in consultation with the State Forest Department shall be prepared and implemented.	<ul style="list-style-type: none"> • Accordingly, The Pri. Chief Conservator of Forests & Chief Wild Life Warden, Government of Andhra Pradesh has approved the Wild Life Conservation plan vide letter No. 21024/19/2022/ WL-2 dated 11.07.2024. The same is being implemented for conservation of Schedule - I species.
xxii.	The company shall provide housing for construction labour within the site with all necessary infrastructure and facilities such as fuel for cooking, mobile toilets, mobile STP, safe drinking water, medical health care, creche etc. The housing may be in the form of temporary structures to be removed after the completion of the project.	<p>Being complied.</p> <p>Separate colony with permanent structures constructed for contract workmen with all necessary infrastructure facilities such as toilets connected with septic tanks, safe drinking water, medical health care, etc.</p>
xxiii.	The National Ambient Air Quality Emission Standards issued by the Ministry vide G.S.R. No. 826 (E) dated 16 th November, 2009 shall be followed.	<p>Being complied.</p> <p>The National Ambient Air Quality Emission Standards issued by the Ministry vide GSR No. 826 (E) dated 16th November, 2009 (applicable to cement plant and thermal power plant) are being complied.</p>
xxiv.	Gaseous emission levels including secondary fugitive emissions from all the sources shall be controlled within the latest permissible limits issued by the Ministry vide G.S.R. 414 (E) dated 30 th May, 2008 and regularly monitored. Guidelines / Code of Practice issued by the CPCB shall be followed.	<p>Being complied.</p> <ul style="list-style-type: none"> • Gaseous emission levels are being maintained within the specific limits. • In cement plant, the limestone absorbs SO₂. • 3 Nos. of low NOx burners and 3 Nos. of low NOx calciners are installed for 3 Nos. of Kilns. • Secondary fugitive emissions are controlled by providing air pollution control equipments, concrete roads, water sprinkling, water fogging systems, greenbelt development, regular cleaning of roads by using road sweeping machines & vacuum cleaners, etc. • Following air pollution control equipment are in operation in the present operating cement plant, thermal power plant & Ramco Budawada Limestone Mine (RF) to control process as well as fugitive emissions from all vulnerable sources, etc.: <ul style="list-style-type: none"> ○ 166 Nos. of RABH / Bag Houses / Bag Filters ○ 5 Nos. of ESPs ○ 6 Nos. of Water Fogging Systems

S. No.	Condition	Compliance Status
		<ul style="list-style-type: none"> • 1 No. of bag filter is in erection and commissioning stage. This will be commissioned along with associated process equipment. • Monitoring is being carried out once in a quarter and records are being maintained. Fugitive dust monitoring data for the period from April 2024 to September 2024 is enclosed as Annexure – I. • Guidelines / code of practice issued by the CPCB in this regard are being followed accordingly.
xxv.	Regular monitoring, of influent and effluent surface, sub-surface and ground water shall be ensured and treated wastewater shall meet the norms prescribed by the State Pollution Control Board or described under the Environment (Protection) Act, 1986.	<p>Being complied.</p> <ul style="list-style-type: none"> • No surface water and ground water are being used for cement plant, thermal power plant, mines and colony requirements. • Mine seepage water is being analysed regularly. • Compiled data of mine seepage water analysis data collected by MoEF&CC approved external laboratory on monthly basis for the period April 2024 to September 2024 is enclosed as Annexure – XII. • The wastewater from boiler blowdown, DM plant regeneration, UF & RO rejects and cooling tower blowdown of TPP are being neutralized in neutralization tank and being used for greenbelt. • Sewage treatment plant is in operation to treat domestic sewage from colony, plant, canteen and offices. • Auto garage wash water is being treated separately at Oil & Grease Trap. • Compiled data of TPP ETP, Oil & Grease and STP outlet samples analysis carried out by MoEF&CC approved agency on monthly basis being for the period April 2024 to September 2024 is enclosed as Annexure – VI, VII & X respectively.
xxvi.	Proper handling, storage, utilization and disposal of all the solid waste shall be ensured and regular report regarding toxic metal content in the waste material and its composition, end use of solid / hazardous waste shall be submitted to the Ministry's Regional Office, SPCB	<p>Being complied.</p> <ul style="list-style-type: none"> • The sludge from sewage treatment plant (STP) is being used as manure for greenbelt development. • Organic wastes are subjected to vermin composting and used as manure for greenbelt. • Inorganic wastes (papers and other wastes)

S. No.	Condition	Compliance Status
	and CPCB.	<p>are properly disposed-off into calciner of the preheater.</p> <ul style="list-style-type: none"> • Kitchen waste is being treated in bio-gas plant and gas generated is being used for cooking in industrial canteen. The sludge from the bio-gas plant is being used as manure for greenbelt. • Waste oil (stored in a tank of capacity 3.5 kL) along with fresh fuel is being used for kiln firing while light up & for reclaimers lubrication and / or sold to APEMC authorized agents. • Disposing waste lead acid batteries to APPCB authorized recyclers / re-processors properly, by storing in a designated area. • Wooden and metallic scrap is being disposed to scrap dealers. • No toxic substance is being handled. • Hazardous waste returns are being submitted to APPCB, regularly.
xxvii.	A time bound action plan shall be submitted to reduce solid waste generated due to the project related activities, its proper utilization and disposal.	<p>Being complied.</p> <p>Action plan to reduce / utilization / disposal of solid waste generated due to project related activities:</p> <ul style="list-style-type: none"> • All metallic scrap, wooden / packing material are being sold out to respective vendors. • Dismantled concrete structures are used for land-filling. • All the used industrial fans / motors are kept separately for re-use. • E-waste is kept separately in a designated place and is being sold to the authorized e-waste handlers.
xxviii.	A Risk and Disaster Management Plan shall be prepared and a copy submitted to the Ministry's Regional Office, SPCB and CPCB within 3 months of issue of environment clearance letter.	<p>Being complied.</p> <ul style="list-style-type: none"> • Respective Final EIA report covering Risk and Disaster Management Plan is submitted to Ministry's Regional Office, Chennai vide Lr. No. RCL/MoEF&CC/71/ 2016-17. • Final EIA report is also submitted to SPCB at the time of submission of respective Consent for Establishment application. • As part of Occupational Health and Safety Management System (OHSMS), we are reviewing Risk Assessment on annual basis or any changes in the process / parameters.
xxix.	All the commitments made to the public during Public Hearing /	<p>Being complied.</p> <ul style="list-style-type: none"> • In the corresponding public hearing meeting,

S. No.	Condition	Compliance Status
	public consultation meeting shall be satisfactorily implemented and adequate budget provision shall be made accordingly.	<p>it is proposed by Joint Collector to all nearby villagers to form Village Committees in their respective villages and submit their requirements.</p> <ul style="list-style-type: none"> • These requests are being fulfilled by necessary budgetary allocation in phased manner, as per priority basis.
xxx.	At least 2.5% of the total cost of the project shall be earmarked towards the Enterprise Social Commitment based on Public Hearing issues, locals need and item-wise details along with time bound action plan shall be prepared and submitted to the Ministry's Regional Office. Implementation of such program shall be ensured by constituting a Committee comprising of the proponent, representatives of village Panchayat and District Administration. Action taken report in this regard shall be submitted to the Ministry's Regional Office.	<p>Being complied.</p> <ul style="list-style-type: none"> • Total cost of the project is Rs. 100 crore. Out of this, 2.5% is Rs. 2.5 crore and same amount is allocated for Enterprise Social Commitment based on Public Hearing issues, local needs. • In the corresponding public hearing meeting, it is suggested by Joint Collector to all nearby villagers to form Village Committees in their respective villages and submit their requirements. • CSR activities are being carried out for upliftment of local areas and account is being maintained. • These include village-wise, sector-wise (Health, Education, Sanitation, Health, Skill Development and infrastructure requirements such as strengthening of village roads, avenue plantation, etc.,) activities in consultation with the local communities and administration. • Any request from Village Committees in their respective villages, schools & hospitals are being fulfilled by necessary budgetary allocation in phased manner, as per priority basis.
xxxi.	The proponent shall prepare a detailed CSR plan for every year for the next 5 years for the existing-cum-expansion project, which includes village-wise, sector-wise (Health, Education, Sanitation, Health, Skill Development and infrastructure requirements such as strengthening of village roads, avenue plantation, etc) activities in consultation with the local communities and administration. The CSR Plan will include the amount of 2% retain annual	<p>Being complied.</p> <ul style="list-style-type: none"> • CSR activities are being carried out for upliftment of local areas and account is being maintained. • These include village-wise, sector-wise (Health, Education, Sanitation, Health, Skill Development and infrastructure requirements such as strengthening of village roads, avenue plantation, etc.,) activities in consultation with the local communities and administration. • Any request from Village Committees in their respective villages, schools & hospitals are being fulfilled by necessary budgetary allocation in phased manner, as per priority

S. No.	Condition	Compliance Status
	<p>profits as provided for in Clause 135 of the Companies Act, 2013 which provides for 2% of the average net profits of previous 3 Years towards CSR activities for life of the project. A separate budget head shall be created and the annual capital and revenue expenditure on various activities of the Plan shall be submitted as part of the Compliance Report to RO. The details of the CSR Plan shall also be uploaded on the company website and shall also be provided in the Annual Report of the company.</p>	<p>basis.</p> <ul style="list-style-type: none"> • Separate budget head is created and the annual capital and revenue expenditure on various activities of the plan is being maintained in corporate level, as per in Clause 135 of the Companies Act, 2013 and its amendments thereof. • Earmarked funds so provided are not being diverted for any other purposes. • Data is being submitted to Regional Office, MoEF&CC along with half-yearly compliance reports. • The details of CSR plan & expenditure made are being uploaded in the company's website and are being provided in the Annual Report of the company.
xxxii.	<p>The Company shall submit within three months their policy towards Corporate Environment Responsibility which shall inter-alia address</p> <p>(i) Standard operating process / procedure to being into focus any infringement / deviation / violation of environmental or forest norms / conditions,</p> <p>(ii) Hierarchical system or Administrative order of the Company to deal with environmental issues and ensuring compliance to the environmental clearance conditions and</p> <p>(iii) System of reporting of non-compliance / violation environmental norms to the Board of Directors of the company and/or stakeholders or shareholders.</p>	<p>Being complied.</p> <ul style="list-style-type: none"> • Final EIA report covering the following is submitted to Ministry at the time of processing of EC: <ul style="list-style-type: none"> ○ Integrated Management System Policy covering Environmental Management Policy towards Corporate Environment Responsibility. ○ Hierarchical system or Administrative order of the Company to deal with environmental issues and ensuring compliance to the environmental clearance conditions. ○ System of reporting of non-compliance / violation environmental norms to the Board of Directors of the company and/or stakeholders or shareholders. • The copy of the same report is also submitted to Ministry's Regional Office Chennai vide Lr. No. RCL/MoEF&CC /71/2016-17.
xxxiii.	<p>The project proponent shall provide for solar light system for all common areas, street lights, villages, parking around project area and maintain the same regularly.</p>	<p>Noted. We will explore the feasibility at our plant. Solar light systems are initiated as street lights.</p>
xxxiv.	<p>The project proponent shall provide for LED lights in their offices and residential areas.</p>	<p>Being complied. The details of providing LED lights in plant, colony & associated mines by the end of</p>

S. No.	Condition	Compliance Status	
		September 2024 are as follows:	
		Total LED light fittings	12996Nos.
		Total rating of LED lights	587674 W
		Amount invested on LED lights (new or replaced)	Rs. 306.91 Lakh

B. General Conditions:

S.No.	Condition	Compliance Status					
i.	The project authorities must strictly adhere to the stipulations made by the Andhra Pradesh Pollution Control Board and the State Government.	<p>Being followed.</p> <ul style="list-style-type: none"> Adhering to the stipulations made by the Andhra Pradesh Pollution Control Board and the State Government. Consent To Operate Order No. APPCB/VJA/VJA/488/HO/CFO/2017- is issued to this project on 02.11.2021, which is valid up to 31.01.2026. Vide order No. APPCB/VJA/VJA/488 /HO/CFO/2017- dated 02.12.2021, validity of CTO dated 02.11.2021 is extended to 31.01.2027. 					
ii.	No further expansion or modifications in the plant shall be carried out without prior approval of the Ministry of Environment, Forest and Climate Change (MoEFCC).	<p>Being complied.</p> <ul style="list-style-type: none"> Obtained EC for expansion proposal from MoEF&CC. The details of the same are as follows: <table border="1"> <thead> <tr> <th>Project</th> <th>EC details</th> </tr> </thead> <tbody> <tr> <td>Increase of clinker production from 3.185 MTPA to 4.685 MTPA & installation of 27 MW Waste Heat Recovery System by installation of Boilers.</td> <td>EC No. J-11011/403/2006-IA-II (I) dated 18.12.2019</td> </tr> </tbody> </table>		Project	EC details	Increase of clinker production from 3.185 MTPA to 4.685 MTPA & installation of 27 MW Waste Heat Recovery System by installation of Boilers.	EC No. J-11011/403/2006-IA-II (I) dated 18.12.2019
Project	EC details						
Increase of clinker production from 3.185 MTPA to 4.685 MTPA & installation of 27 MW Waste Heat Recovery System by installation of Boilers.	EC No. J-11011/403/2006-IA-II (I) dated 18.12.2019						
iii.	At least four ambient air quality monitoring stations should be established in the downward direction as well as where maximum ground level concentration of PM ₁₀ , PM _{2.5} , SO ₂ and NO _x are anticipated in consultation with the SPCB. Data on ambient air quality and stack emission shall be regularly submitted to this Ministry including its Regional Office at Chennai and the SPCB / CPCB once in six months.	<p>Being complied.</p> <ul style="list-style-type: none"> 3 Nos. of ambient air quality monitoring stations are established near to plant boundary and 9 Nos. of ambient air quality monitoring stations are established in nearby villages. Ambient air monitoring is being carried out by MoEF&CC approved external laboratory and efforts are being made that the ambient air quality parameters conform to the norms prescribed by the CPCB. Compiled data of ambient air quality monitoring data collected by MoEF&CC approved external laboratory on monthly 					

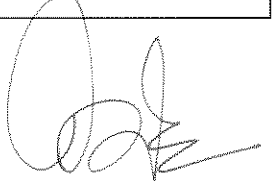
S.No.	Condition	Compliance Status
		basis for the period April 2024 to September 2024 is enclosed as Annexure - III.
iv.	Industrial wastewater shall be properly collected, treated so as to conform to the standards prescribed under GSR 422 (E) dated 19 th May, 1993 and 31 st December, 1993 or as amended from time to time. The treated wastewater shall be utilized for plantation purpose.	<p>Being complied.</p> <ul style="list-style-type: none"> • No process effluent generation from cement manufacturing. • TPP effluent is being treated in effluent treatment plant. The wastewater from boiler blow down, DM plant regeneration, UF & RO rejects and cooling tower blow down of TPP are being neutralized in neutralization tank and being used for greenbelt. • Sewage treatment plant is in operation to treat domestic sewage from colony and plant. • Auto garage wash water is being treated separately at Oil & Grease Trap. • Compiled data of treated TPP ETP, Oil & Grease and STP outlet samples analysis [conforming to the standards prescribed under GSR 422 (E) dated 19th May, 1993 and 31st December, 1993 or as amended from time to time] carried out by MoEF&CC approved agency on monthly basis being for the period April 2024 to September 2024 is enclosed as Annexure – VI, VII & X respectively. • These treated effluents are used for greenbelt, water sprinkling & partially for process activities. • The excess treated waste water, if any, is being passed to ponds (around 0.5 ha & 0.15 ha) in our own lands to uplift the water table nearby area.
v.	The overall noise levels in and around the plant area shall be kept well within the standards (85 dBA) by providing noise control measures including acoustic hoods, silencers, enclosures etc. on all sources of noise generation. The ambient noise levels should conform to the standards prescribed under EPA Rules, 1989 viz. 75 dBA (daytime) and 70 dBA (nighttime).	<p>Being complied.</p> <ul style="list-style-type: none"> • Providing noise control measures including acoustic hoods, silencers, enclosures etc. at all sources of noise generation. • Efforts are made to achieve noise levels within norms. • Ambient noise levels are being monitored during day and night time and records are being maintained.
vi.	Occupational health surveillance of the workers shall be done on a regular basis and records maintained as per the Factories Act.	<p>Being complied.</p> <ul style="list-style-type: none"> • Occupational health checkup is being carried for all the employees, covering lung function and sputum analysis tests also.

S.No.	Condition	Compliance Status
		<ul style="list-style-type: none"> • Occupational health surveillance programme is being carried for the employees regularly and records are being maintained. Occupational Health Centre (with qualified Occupational Health Specialist with supporting staff) is established with the following facilities: <ul style="list-style-type: none"> ○ X-ray ○ ECG ○ Spirometry (lung function test) ○ Audiometry ○ Semi-auto analyser to carryout bio-chemical tests ○ Clinical lab for micro-biological tests (including sputum test) ○ Checking colour blindness ○ Ambulance
vii.	The company shall develop rain water harvesting structures to harvest the rain water for utilization in the lean season besides recharging the ground water table.	<p>Being complied.</p> <ul style="list-style-type: none"> • 48 Nos. & 4 Nos. of rain water harvesting structures are made to recharge the ground water in the colony & plant respectively by September 2024 (Annexure - XIII). • Run-off and seepage water collected in mine pits is only being used for cement plant, thermal power plant, waste heat recovery plant and for domestic purposes, to conserve fresh water. • The excess treated waste water, if any, is being passed to ponds (around 0.5 ha & 0.15 ha) in our own lands to uplift the water table nearby area.
viii.	The project proponent shall also comply with all the environmental protection measures and safeguards recommended in the EIA / EMP report. Further, the company must undertake socio-economic development activities in the surrounding villages like community development programmes, educational programmes, drinking water supply and health care etc.	<p>Being complied.</p> <ul style="list-style-type: none"> • Environmental protection measures and safeguards mentioned in the EIA / EMP report submitted for the said project are being complied. • Rs. 2996.3547 lakh spent as recurring cost and Rs. 97.4472 lakh spent on capital cost in the financial year 2023-2024 respectively, for various environmental protection measures associated with plant & mines. • Details of expenditure for environmental protection measures are being submitted to the Ministry along with half-yearly compliance reports regularly. • CSR activities are being carried out for upliftment of local areas and account is being maintained.

S.No.	Condition	Compliance Status
		<ul style="list-style-type: none"> • These include village-wise, sector-wise (Health, Education, Sanitation, Health, Skill Development and infrastructure requirements such as strengthening of village roads, avenue plantation, etc). Any request from Village Committees in their respective villages, schools & hospitals are being fulfilled by necessary budgetary allocation in phased manner, as per priority basis. • Earmarked funds so provided are not being diverted for any other purposes.
ix.	<p>Requisite funds shall be earmarked towards capital cost and recurring cost / annum for environment pollution control measures to implement the conditions stipulated by the Ministry of Environment, Forest and Climate Change (MoEFCC) as well as the State Government. An implementation schedule for implementing all the conditions stipulated herein shall be submitted to the Regional Office of the Ministry at Chennai. The funds so provided shall not be diverted for any other purpose.</p>	<p>Being complied.</p> <ul style="list-style-type: none"> • Earmarked funds so provided are not being diverted for any other purposes. • Rs. 431 lakh spent on new air pollution control equipment in the financial year 2016-17 as part of the Line – I expansion project. • Greenbelt expenditure in the financial year 2023-2024 is Rs. 102.179 lakh with respect to plant, colony, mining lease areas and nearby areas. • Rs. 2996.3547 lakh spent as recurring cost and Rs. 97.4472 lakh spent on capital cost in the financial year 2023-2024 respectively, for various environmental protection measures associated with plant & mines. • Details of expenditure for environmental protection measures are being submitted to the Ministry along with half-yearly compliance reports regularly. • Rs. 1611.20 lakh is allocated for Environment Management Activities for the financial year 2024-2025 towards capital & recurring costs for plant & mines and being spent.
x.	<p>A copy of clearance letter shall be sent by the proponent to concerned Panchayat, Zila Parishad / Municipal Corporation, Urban Local Body and the local NGO, if any, from whom suggestions / representations, if any, were received while processing the proposal. The clearance letter shall also be put on the web site of the company by the proponent.</p>	<p>Noted.</p> <ul style="list-style-type: none"> • Informed to local Panchayat. • The clearance letter is uploaded to the company's website.
xi.	<p>The project proponent shall upload the status of compliance of the stipulated environment clearance</p>	<p>Being complied.</p> <ul style="list-style-type: none"> • The status of compliance of the stipulated environment clearance conditions, including

S.No.	Condition	Compliance Status
	<p>conditions, including results of monitored data on their website and shall update the same periodically. It shall simultaneously be sent to the Regional Office of the MOFFCC at Chennai, The respective Zonal Office of CPCB and the SPCB. The criteria pollutant levels namely; PM₁₀, SO₂, NO_x (ambient levels as well as stack emissions) or Critical sectoral parameters, indicated for the projects shall be monitored and displayed at a convenient location near the main gate of the company in the public domain.</p>	<p>results of monitored data is uploaded periodically to the company's website.</p> <ul style="list-style-type: none"> • Half-yearly compliance reports are being submitted to APPCB and CPCB regularly. • Half-yearly compliance reports submitted to the Regional Office of Ministry located at Chennai on regular basis (up to the period October 2018 to March 2019). • Vide Notice from MoEF&CC, Chennai dated 13.08.2019, this copy of half-yearly compliance report is mailed to ecompliance-ap@gov.in. • The criteria pollutant levels namely; PM₁₀, PM_{2.5}, SO₂, NO_x (ambient levels as well as stack emissions), indicated for the projects are monitored and displayed at main gate of the company in the public domain.
xii.	<p>The project proponent shall also submit six monthly reports on the status of the compliance of the stipulated environmental conditions including results of monitored data (both in hard copies as well as by e-mail) to the Regional Office of MOFFCC, the respective Zonal office of CPCB and the SPCB. The Regional Office of this Ministry at Chennai / CPCB / SPCB shall monitor the stipulated conditions.</p>	<p>Being complied.</p> <ul style="list-style-type: none"> • Vide Notice from MoEF&CC, Chennai dated 13.08.2019, this copy of half-yearly compliance report is mailed to ecompliance-ap@gov.in. • Half-yearly compliance reports along with compiled monitoring data is being submitted to CPCB regularly. • Regularly submitting hard copies of six monthly compliance reports on compliance status of the stipulated environmental conditions including results of monitored data to the State PCB .
xiii.	<p>The environmental statement for each financial year ending 31st March in Form-V as is mandated to be submitted by the project proponent to the concerned State Pollution Control Board as prescribed under the Environment (Protection) Rules, 1986, as amended subsequently, shall also be put on the website of the company along with the status of compliance of environmental conditions and shall also be sent to the respective Regional Office of the MOEFCC at Chennai by e-mail.</p>	<p>Being complied.</p> <ul style="list-style-type: none"> • Environment statement in Form – V is being submitted regularly within stipulated time to the APPCB. • Soft copy of the same is being submitted to Regional Office, MoEF&CC, Chennai. • Soft copy is also kept on the Company's website regularly.
xiv.	<p>The Project Proponent shall inform the public that the project has been accorded environmental clearance</p>	<p>Complied. Published the same in 05.10.2016 Eenadu (Telugu) & The Hindu (English) newspapers and</p>

S.No.	Condition	Compliance Status
	<p>by the Ministry and copies of the clearance letter are available with the SPCB and may also be seen at Website of the Ministry of Environment, Forests and Climate Change (MoEFCC) at http://envfor.nic.in. This shall be advertised within seven days from the date of issue of the clearance letter, at least in two local newspapers that are widely circulated in the region of which one shall be in the vernacular language of the locality concerned and a copy of the same should be forwarded to the Regional office at Chennai.</p>	<p>copy submitted to Regional Office, Ministry vide Lr. No. RCL/MoEF&CC/60/2016-17 dated 05.10.2016.</p>
xv.	<p>Project authorities shall inform the Regional Office as well as the Ministry, the date of financial closure and final approval of the project by the concerned authorities and the date of commencing the land development work.</p>	<p>Noted. Date of financial closure for this project is not required as total funding for this project is from own funds.</p>


(Signature)

HALF-YEARLY COMPLIANCE REPORT

Environmental Clearance Letter/s No. and Date	J-11011/403/2006-IA II (I) and 09.06.2009
Name of the Project	The Ramco Cements Limited, Cement Plant – 2.8 Million TPA Clinker, 3.65 Million TPA Cement, Thermal Power Plant – 36 MW
Period of Compliance Report	April 2024 to September 2024

A. Specific Conditions:

S.No.	Condition	Compliance Status
i.	Continuous stack monitoring facilities to monitor gaseous emissions from all the stacks shall be provided. After expansion, limit of SPM shall be controlled within 50 mg/Nm ³ by installing adequate air pollution control system viz. Electrostatic precipitators, bag house, bag filters etc. Data on ambient air, fugitive and stack emissions shall be submitted to the Ministry's Regional Office at Bangalore, AP Pollution Control Board (APPCB) and CPCB regularly.	<p>Being complied.</p> <ul style="list-style-type: none"> • 13 Nos. of online monitors are installed to measure particulate emissions for stacks and linked up with APPCB and CPCB websites. • All the air pollution control equipment for cement plant Line – I and Line – II are designed for particulate emission level of 30 mg/Nm³, whereas for cement plant Line – III are designed for 20 mg/Nm³. • All the air pollution control equipments for TPP are designed for particulate emission level of 50 mg/Nm³. • As our pyritic sulphur in limestone is less than 0.25%, our SO₂ standard for Kiln – I, II & III is 100 mg/Nm³. The sulphur content is absorbed in clinker and the emission levels are well within the limit. • Low NOx burners and low NOx calciners are installed for Kiln – I, II & III to meet the NOx standard of 600 mg/Nm³ for Kiln – I & III and 800 mg/Nm³ for Kiln – II respectively. • Data on ambient air and stack emissions is being regularly submitted to APPCB on monthly basis. Complied data is being submitted along with half-yearly compliance reports to APPCB, MoEF&CC and CPCB. • Compiled data of stack monitoring and ambient air collected by MoEF&CC approved external laboratory on monthly basis for the period April 2024 to September 2024 is enclosed as Annexure – II & III respectively.
ii.	Possibilities shall be explored for the proper and full utilization of gases	<p>Being complied.</p> <ul style="list-style-type: none"> • Environmental Clearance No. No. J-

S.No.	Condition	Compliance Status
	generated from the kiln in waste heat recovery boiler (WHRB) and a feasibility report shall be prepared and submitted to the Ministry and its Regional Office at Bangalore within 3 months from the date of issue of the letter.	<p>11011/403/2006-IA-II (I) dated 18.12.2019 is obtained from MoEF&CC for utilization of these hot gases from 3 Nos. of Kiln lines to produce 27 MW power.</p> <ul style="list-style-type: none"> • CTO for the same is obtained and these waste heat recovery systems are being operating.
iii.	As proposed, Electrostatic precipitators (ESPs) to clinker, bag house to kiln / raw mill, coal mill and pulse jet bag filters to cement mill and slag mill shall be provided to control gaseous emissions within 50 mg/Nm ³ . Bag filters shall also be provided at transfer points. Water sprinklers shall be provided to control dust emissions in cement plant and mine area.	<p>Being complied.</p> <ul style="list-style-type: none"> • All the air pollution control equipment for cement plant Line – I and Line – II are designed for particulate emission level of 30 mg/Nm³, whereas for cement plant Line – III are designed for 20 mg/Nm³. • Whereas, all the air pollution control equipments for TPP are designed for particulate emission level of 50 mg/Nm³. • All material transfer points are connected with air pollution control devices. • Water fogging system is installed at limestone crusher hoppers. • Following air pollution control equipment are in operation in the present operating cement plant, thermal power plant & Ramco Budawada Limestone Mine (RF) to control process as well as fugitive emissions from all vulnerable sources, etc.: <ul style="list-style-type: none"> ○ 166 Nos. of RABH / Bag Houses / Bag Filters ○ 5 Nos. of ESPs ○ 6 Nos. of Water Fogging Systems • 1 No. of bag filter is in erection and commissioning stage. This will be commissioned along with associated process equipment. • Permanent water sprinkling system installed at mines haul road. • In addition to this, water sprinkling is being done with truck mounted sprinklers on roads of cement plant and mines internal haul roads.
iv.	Ambient air monitoring shall be carried out in and around the project site and efforts shall be made to control and minimize the particulate matters to bare minimum. One ambient air quality monitoring station shall be installed in downwind direction. It shall be ensured that the	<p>Being complied.</p> <ul style="list-style-type: none"> • 3 Nos. of ambient air quality monitoring stations are established near to plant boundary and 9 Nos. of ambient air quality monitoring stations are established in nearby villages. • Ambient air monitoring is being carried out by MoEF&CC approved external laboratory

S.No.	Condition	Compliance Status
	<p>ambient air quality parameters conform to the norms prescribed by the CPCB in this regard.</p>	<p>and efforts are being made that the ambient air quality parameters conform to the norms prescribed by the CPCB.</p> <ul style="list-style-type: none"> • Compiled data of ambient air quality monitoring data collected by MoEF&CC approved external laboratory on monthly basis for the period April 2024 to September 2024 is enclosed as Annexure - III.
v.	<p>The company shall install adequate dust collection and extraction system to control fugitive dust emissions at various transfer points, raw mill handling (unloading, conveying, transporting, stacking), vehicular movement, bagging and packing areas etc. Crusher shall be operated with high efficiency bag filters. All conveyers shall be covered with GI sheets. Covered sheds for storage of raw materials and fully covered conveyers for transportation of materials shall be provided besides coal, cement, fly ash and clinker shall be stored in silos. Pneumatic system shall be used for fly ash handling. Regular water sprinkling shall be carried out in critical areas prone to air pollution and having high levels of SPM and RPM particularly in mine area and other vulnerable areas.</p>	<p>Being complied.</p> <ul style="list-style-type: none"> • Following air pollution control equipment are in operation in the present operating cement plant, thermal power plant & Ramco Budawada Limestone Mine (RF) to control process as well as fugitive emissions at various transfer points, raw mill handling (unloading, conveying, transporting, stacking), vehicular movement, bagging and packing areas etc.: <ul style="list-style-type: none"> ○ 166 Nos. of RABH / Bag Houses / Bag Filters ○ 5 Nos. of ESPs ○ 6 Nos. of Water Fogging Systems • 1 No. of bag filter is in erection and commissioning stage. This will be commissioned along with associated process equipment. • All the air pollution control equipment for cement plant Line – I & II are designed for particulate emission level of 30 mg/Nm³ and 20 mg/Nm³ for cement plant Line - III. • Whereas, all the air pollution control equipments for TPP are designed for particulate emission level of 50 mg/Nm³. • High efficiency bag filters are provided for LS crusher and additive crusher. • The dust collected from APCE is being totally recycled to the respective process / storage facility. • All packing machines are fitted with bag filters. • Covered sheds for storage of raw materials and fully covered conveyers for transportation of materials are made for coal and other raw materials. Cement, fly ash and clinker are being stored in silos. • Unloading of brought out fly ash and conveyance of cement & fly ash (from silo /

S.No.	Condition	Compliance Status
		<p>from TPP) are carried out through pneumatic system.</p> <ul style="list-style-type: none"> • Water spray system is arranged around the coal stacker & reclaimer. • Water fogging system is installed at limestone crusher hopper. • Permanent water sprinkling system installed at mines haul road. • In addition to this, water sprinkling is being done with truck mounted sprinklers on roads of cement plant and mines internal haul roads. • 3 Nos. of Mobile Road Sweepers & 2 Nos. of Industrial Vacuum Cleaners are being used for dust removal. • The removed / collected dust is being reused in the respective process.
vi.	<p>Data on ambient air quality, stack emissions and fugitive emissions shall be regularly submitted on-line to the Ministry's Regional Office at Bangalore, Central Pollution Control Board (CPCB) and AP Pollution Control Board (APPCB) as well as hard copy once in six months. Data on SPM, SO₂ and NO_x shall also be displayed outside the premises at the appropriate place for the general public.</p>	<p>Being complied.</p> <ul style="list-style-type: none"> • Compiled data of quarterly fugitive dust monitoring, monthly stack monitoring and monthly ambient air quality monitoring collected by MoEF&CC approved external laboratories for the period April 2024 to September 2024 is enclosed as Annexure – I, II & III respectively. The copy of the same is submitted to CPCB. • Online data on stack monitoring is linked up with APPCB & CPCB websites and online data on ambient air quality is linked up with APPCB website. • Data on PM, SO₂ & NO_x for the stacks and PM₁₀, PM_{2.5}, SO₂ & NO_x data for ambient air quality respectively displayed outside the premises through digital display for the general public.
vii.	<p>Asphalting / concreting of roads and water spray all around the critical areas prone to air pollution and having high levels of SPM and RPM shall be ensured.</p>	<p>Being complied.</p> <ul style="list-style-type: none"> • All major roads of the plant are paved with concrete. • Water sprinkling is being done with truck mounted sprinklers on critical roads of cement plant.
viii.	<p>Secondary fugitive emissions shall be controlled and shall be within the prescribed limits and regularly monitored. Guidelines / Code of Practice issued by the CPCB in this regard shall be followed.</p>	<p>Being complied.</p> <ul style="list-style-type: none"> • Secondary fugitive emissions being controlled by providing air pollution control equipments, concrete roads, water sprinkling, fogging systems, greenbelt development, regular cleaning of roads by using road sweeping machines & vacuum

S.No.	Condition	Compliance Status
		<p>cleaners, etc.</p> <ul style="list-style-type: none"> • All the material transfer points are equipped with dust collection systems to control secondary fugitive emissions. • Following air pollution control equipment are in operation in the present operating cement plant, thermal power plant & Ramco Budawada Limestone Mine (RF) to control process as well as fugitive emissions from all vulnerable sources, etc.: <ul style="list-style-type: none"> ○ 166 Nos. of RABH / Bag Houses / Bag Filters ○ 5 Nos. of ESPs ○ 6 Nos. of Water Fogging Systems • 1 No. of bag filter is in erection and commissioning stage. This will be commissioned along with associated process equipment. • Water fogging system is installed at limestone crusher hopper. • Monitoring is being carried out once in a quarter and records are being maintained. Fugitive dust monitoring data for the period from April 2024 to September 2024 is enclosed as Annexure – I. • Guidelines / code of practice issued by the CPCB in this regard are being followed accordingly.
ix.	<p>Efforts shall be made to reduce impact of the transport of the raw materials and end products on the surrounding environment including agricultural land. All the raw materials including fly ash shall be transported in the closed containers only and shall not be overloaded. Vehicular emissions shall be regularly monitored.</p>	<p>Being complied.</p> <ul style="list-style-type: none"> • Major portion of raw materials (including limestone), clinker (intermediate product) and cement (end product) are being transported through closed wagons to control dust on surrounding agricultural lands. • Fly ash is being transported in the closed containers only. • The fly ash generated from TPP is used in the manufacturing of cement, through pneumatic system. • All the raw material containers are not being overloaded, at the time of transportation. • It is ensured that vehicular emissions are being regularly monitored by respective transporters.
x.	<p>Total water requirement for cement</p>	<p>Being complied.</p>

S.No.	Condition	Compliance Status
	<p>plant from bore wells / mine pit water shall not exceed 6,630 m³/day. The wastewater from boiler blowdown, DM plant regeneration waste water, UF & RO rejects shall be neutralized in neutralization tank and mixed with cooling tower blow down in a Central Monitoring Basin (CMB) and used for greenbelt development. All the treated wastewater shall be recycled and reused in the process and / or for dust suppression and greenbelt development and other plant related activities etc. No process waste water shall be discharged outside the factory premises and 'zero' discharge shall be adopted.</p>	<ul style="list-style-type: none"> ● To reduce the water consumption in the plant, installed 27 MW waste heat recovery system boilers with air cooled condensers, thereby stopping 1 No. of coal based boiler having water cooled condenser. Water requirement is reduced to 5,850 KLD, by this. ● No process effluent generation from cement manufacturing. ● TPP effluent is being treated in effluent treatment plant. The wastewater from boiler blowdown, DM plant regeneration, UF & RO rejects and cooling tower blowdown of TPP are being neutralized in neutralization tank and being used for greenbelt. ● Sewage treatment plant is in operation to treat domestic sewage from colony, office, canteen and plant. ● Auto garage wash water is being treated separately at Oil & Grease Trap. ● Compiled data of TPP ETP, Oil & Grease and STP outlet samples analysis carried out by MoEF&CC approved agency (on monthly basis) for the period April 2024 to September 2024 is enclosed as Annexure – VI, VII & X respectively. ● These treated effluents are used for greenbelt, water sprinkling & partially for process activities. ● The excess treated waste water, if any, is being passed to pond in our company's own lands to uplift the water table in the nearby area. ● With all these measures, 'zero discharge' is being maintained.
xi.	<p>'Permission' for the drawl of 6,630 m³/day ground water / mine pit water shall be obtained from the Central Ground Water Authority / State Ground Water Board (GGWA / SGWB) and a copy of the letter shall be submitted to the Ministry's Regional Office at Bangalore within 3 months of issue of the environment clearance.</p>	<p>Being complied.</p> <ul style="list-style-type: none"> ● Permission obtained from Panchayat Raj & Rural Development Department (nodal agency for Central Ground Water Department) vide Lr. No. PRR05-11028/45/2018-SLNA-GIS-CORD dated 13.11.2021, which is valid up to 12.11.2024 for drawl of 7000 m³/day water from the available quantity of water from the mine de-watering only. Renewal application submitted on 23.08.2024. ● To further reduce the water consumption in

S.No.	Condition	Compliance Status
		the plant, installed 27 MW waste heat recovery system boilers with air cooled condensers, thereby stopping 1 No. of coal based boiler having water cooled condenser. Water requirement is reduced to 5,850 KLD, by this.
xii.	All the bag filter dust, raw meal dust, coal dust, clinker dust and cement dust from air pollution control devices shall be recycled and reused in the process and used for cement manufacturing. The sludge from sewage treatment plant (STP) shall be used as manure for greenbelt development. Organic wastes shall be subjected to vermin composting and used as manure for greenbelt. Inorganic wastes (papers and other wastes) shall be properly disposed off or sold to rag pickers / scrap dealers. Used oil and batteries shall be used in kiln as an alternate fuel and / or sold to authorized recyclers / re-processors only.	<p>Being complied.</p> <ul style="list-style-type: none"> • All the bag filter dust, raw meal dust, coal dust, clinker dust and cement dust from air pollution control devices are being recycled totally in the respective section and reused in the cement manufacturing process. • The sludge from sewage treatment plant (STP) is being used as manure for greenbelt development. • Organic wastes are subjected to vermin composting and used as manure for greenbelt. • Bio-gas plant is in operation to digest food waste collected and the sludge from this plant is used as manure. • Inorganic wastes (papers and other wastes) are properly disposed into calciner of the preheater. • Waste oil (stored in a tank of capacity 3.5 kL) along with fresh fuel is being used for kiln firing while light up & for reclaimers lubrication and / or sold to APEMC authorized agents. • Disposing waste lead acid batteries to APEMC authorized recyclers / re-processors properly, by storing in a designated area.
xiii.	An effort shall be made to use of high calorific hazardous waste in the cement kiln and necessary provision shall be made accordingly.	<p>Being complied.</p> <ul style="list-style-type: none"> • Obtained Consent To Operate Amendment Order from APPCB to utilize various hazardous / non-hazardous wastes as fuel in cement plant kilns as co-processing to achieve best practice norms vide order No. APPCB/VJA/VJA/488/ CTO/HO/2019- dated 30.11.2022, which is valid up to 31.01.2027. • Utilizing of hazardous wastes in the co-processing, procured from APEMC portal. • 2 Nos. of liquid hazardous waste tanks with necessary pumping system is made to feed into the cement kilns. • Dedicated shed is made to store the solid hazardous waste and to blend with coal for feeding into coal mill circuits for grinding

S.No.	Condition	Compliance Status
		and for further feeding into the cement kilns.
xiv.	Efforts shall be made to use low-grade lime, more fly ash and solid waste in the cement manufacturing.	<p>Being complied.</p> <ul style="list-style-type: none"> • Low grade limestone is being used by blending activity. • The fly ash consumed in the period from April 2024 to September 2024 is 86,804 Tonne. • The slag consumed in the period from April 2024 to September 2024 is 39,689.1 Tonne.
xv.	All the fly ash shall be utilized as per Fly Ash Notification, 1999 subsequently amended in 2003. Efforts shall be made to use fly ash and slag maximum in making Pozollona Portland Cement (PPC) and Portland Slag Cement (PSC).	<p>Being complied.</p> <ul style="list-style-type: none"> • The fly ash generated from TPP is used in the manufacturing of cement. • The fly ash consumed in the period from April 2024 to September 2024 is 86,804 Tonne. • The slag consumed in the period from April 2024 to September 2024 is 39,689.1 Tonne.
xvi.	As proposed, greenbelt shall be developed in 172.75 ha (69.63%), out of total 248.08 ha area in and around the cement plant as per the CPCB guidelines to mitigate the effects of air emissions in consultation with local DFO.	<p>Being complied.</p> <ul style="list-style-type: none"> • Greenbelt is developed in an area of 130.24 ha by September 2024, by planting different species including native species. This condition is modified in the latest Environmental Clearance issued for Cement Plant expansion project [No. J-11011/403/2006-IA-II (I) dated 29th September, 2016], as point No. vi of specific conditions: <ul style="list-style-type: none"> ○ A greenbelt of 130.24 ha (52.5 % of 248.08 ha) as on 30.11.2014 has been developed, which should be maintained as it is. • Emphasis is being made to maintain 130.24 ha greenbelt area in and around plant premises and for planting dust capturing plants in consultation with local DFO to mitigate the effects of air emissions.
xvii.	Permission and recommendations of the State Forest Department regarding impact of proposed plant on surrounding reserve forests viz. Jaggayapeta Extension RF (0.2-10.5 km, E-S), Budavada RF (3.2-10.5 km, W), Ballusupadu RF (6-11 km, WNW), Gandrayi RF (8.5-11 km, NNW) and Kuntimaddi RF (8 km, SSE) shall be obtained and implemented. Further, Conservation Plan for the	<p>Being complied.</p> <ul style="list-style-type: none"> • District Forest Officer, Vijayawada has accorded 'No Objection Certificate' for the modernization project, vide Lr. No. 712/2000-V6 dated 13.05.2009. • Wildlife conservation plan prepared for Schedule - I species and submitted to Chief Wildlife Warden, Govt. of A.P, Forest Department. • Accordingly, The Prl. Chief Conservator of Forests & Chief Wild Life Warden,

S.No.	Condition	Compliance Status
	conservation of wild fauna in consultation with the State Forest Department shall be prepared and implemented.	Government of Andhra Pradesh has approved the Wild Life Conservation plan vide letter No. 21024/19/2022/ WL-2 dated 11.07.2024. The same is being implemented for conservation of Schedule - I species.
xviii.	All the recommendations made in the Charter on Corporate Responsibility for Environment Protection (CREP) for the Cement plants shall be implemented.	Being implemented. <ul style="list-style-type: none"> • CREP guidelines are being followed. • The compliance report for CREP guidelines for cement plant is enclosed as Annexure - V.
xix.	The company shall provide housing for construction labour within the site with all necessary infrastructure and facilities such as fuel for cooking, mobile toilets, mobile STP, safe drinking water, medical health care, crèche etc. The housing may be in the form of temporary structures to be removed after the completion of the project.	Being complied. Separate colony with permanent structures is constructed for contract workmen with all necessary infrastructure facilities such as toilets connected with septic tanks, safe drinking water, medical health care, etc., at the time of construction.

B.General Conditions:

S.No.	Condition	Compliance Status						
i.	The project authority shall adhere to the stipulations made by Andhra Pradesh Pollution Control Board (APPCB) and State Government.	Being complied. <ul style="list-style-type: none"> • Combined Consent To Operate order No. APPCB/VJA/VJA/488/HO/CFO/2017- dated 02.11.2021 (which is valid up to 31.01.2026), are being be scrupulously followed. • Vide order No. APPCB/VJA/VJA/488/HO/ CFO/2017- dated 02.12.2021, validity of CTO dated 02.11.2021 is extended up to 31.01.2027. 						
ii.	No further expansion or modification of the plant shall be carried out without prior approval of this Ministry.	Being complied. Ministry accorded EC orders for expansion projects (after this subject EC): <table border="1" data-bbox="815 1675 1444 2067"> <thead> <tr> <th>Project</th> <th>EC details</th> </tr> </thead> <tbody> <tr> <td>Increase of clinker production from 2.80 MTPA to 3.185 MTPA & for installation 6 MW Turbo Generator</td> <td>EC No. J-11011/403/2006-IA-II (I) dated 29.09.2016.</td> </tr> <tr> <td>Increase of clinker production from 3.185 MTPA to 4.685 MTPA & installation of 27 MW</td> <td>EC No. J-11011/403/2006-IA-II (I) and 18.12.2019.</td> </tr> </tbody> </table>	Project	EC details	Increase of clinker production from 2.80 MTPA to 3.185 MTPA & for installation 6 MW Turbo Generator	EC No. J-11011/403/2006-IA-II (I) dated 29.09.2016.	Increase of clinker production from 3.185 MTPA to 4.685 MTPA & installation of 27 MW	EC No. J-11011/403/2006-IA-II (I) and 18.12.2019.
Project	EC details							
Increase of clinker production from 2.80 MTPA to 3.185 MTPA & for installation 6 MW Turbo Generator	EC No. J-11011/403/2006-IA-II (I) dated 29.09.2016.							
Increase of clinker production from 3.185 MTPA to 4.685 MTPA & installation of 27 MW	EC No. J-11011/403/2006-IA-II (I) and 18.12.2019.							


S.No.	Condition	Compliance Status	
		Waste Heat Recovery System by installation of 7 Nos. of boilers	
iii.	The gaseous and particulate matter emissions from various units shall conform to the standards prescribed by the AP Pollution Control Board. At no time, the particulate emissions from the cement plant shall exceed APPCB limit. Interlocking facility shall be provided in the pollution control equipment so that in the event of the pollution control equipment not working, the respective unit(s) is shutdown automatically.	<p>Being complied.</p> <ul style="list-style-type: none"> • Efforts are being made to adhere to the gaseous and particulate matter emissions from various units to the standards prescribed by the APPCB. • All the air pollution control equipment for cement plant Line – I & Line – II are designed for particulate emission level of 30 mg/Nm³ and cement plant Line – III air pollution control equipment are designed for particulate emission level of 20 mg/Nm³. • All the air pollution control equipments for TPP are designed for particulate emission level of 50 mg/Nm³. • As our pyritic sulphur in limestone is less than 0.25%, our SO₂ standard for Kiln – I, II & III is 100 mg/Nm³. The Sulphur content is absorbed in clinker and the emission levels are well within the limit. • Low NOx burners and low NOx calciners are installed for Kiln – I, II & III to meet the NOx standard of 600 mg/Nm³ for Kiln – I & III and 800 mg/Nm³ for Kiln – II respectively. • In the event of pollution control equipment not working, the respective unit(s) gets stopped automatically in phased manner with associated interlocks. 	
iv.	Ambient air quality including ambient noise levels shall not exceed the standards stipulated under EPA or by the State authorities. Monitoring of ambient air quality and stack emissions shall be carried out regularly in consultation with APPCB and report submitted to the APPCB quarterly and to the Ministry's Regional Office at Bangalore half-yearly.	<p>Being complied.</p> <ul style="list-style-type: none"> • 3 Nos. of ambient air quality monitoring stations are established near to plant boundary and 9 Nos. of ambient air quality monitoring stations are established in nearby villages. • Compiled data of stack monitoring and ambient air quality monitoring carried out by MoEF&CC approved agency on monthly basis for the period April 2024 to September 2024 is enclosed as Annexure – II & III respectively. • Monthly stack & ambient air quality monitoring data are being submitted to APPCB on regular basis. • Providing noise control measures including acoustic hoods, silencers, enclosures etc. at all sources of noise generation. 	

S.No.	Condition	Compliance Status
		<ul style="list-style-type: none"> • Efforts are being made to achieve noise levels within norms. • Half-yearly compliance reports are being submitted to APPCB. • Half-yearly compliance reports submitted to the Regional Office of Ministry located at Chennai on regular basis (up to the period October 2018 to March 2019). Vide Notice from MoEF&CC, Chennai dated 13.08.2019, this copy of half-yearly compliance report is mailed to ecompliance-ap@gov.in.
v.	The company must harvest the rainwater from the rooftops and storm water drains to recharge the ground water and use the same water for the various activities of the project to conserve fresh water.	<p>Being complied.</p> <p>To conserve fresh water,</p> <ul style="list-style-type: none"> • 48 Nos. & 4 Nos. of rain water harvesting structures are made to recharge the ground water in the colony & plant respectively by September 2024 (Annexure – XIII). • Water collected in mine pits is being used for cement plant, for thermal power plant, mines & for domestic uses. • Treated waste water from TPP ETP, Oil & Grease Trap and STP is used for greenbelt, water sprinkling and partially for process activities.
vi.	The company shall undertake eco-development measures including community welfare measures in the project area.	<p>Being complied.</p> <ul style="list-style-type: none"> • Contributed Rs. 15 lakh for development of Butterfly Park at Mulapadu Village, NTR District. • CSR activities are being carried out for upliftment of local areas and account is being maintained. • These include village-wise, sector-wise (Health, Education, Sanitation, Health, Skill Development and infrastructure requirements such as strengthening of village roads, avenue plantation, etc). • Any request from Village Committees in their respective villages, schools & hospitals are being fulfilled by necessary budgetary allocation in phased manner, as per priority basis.
vii.	The overall noise levels in and around the plant area shall be kept well within the standards (85 dBA) by providing noise control measures including acoustic hoods, silencers, enclosures etc. on all sources of noise generation. The ambient noise levels	<p>Being complied.</p> <ul style="list-style-type: none"> • Providing noise control measures including acoustic hoods, silencers, enclosures etc. at all sources of noise generation. • Efforts are made to achieve noise levels within norms.

S.No.	Condition	Compliance Status
	shall conform to the standards prescribed under Environmental (Protection) Act, 1986 Rules, 1989 viz. 75 dBA (day time) and 70 dBA (night time).	<ul style="list-style-type: none"> ● Ambient noise levels are being monitored during day and night time and records are being maintained.
viii.	All recommendations made in the Corporate Responsibility for Environment Protection (CREP) for cement plants shall be implemented.	Being implemented. <ul style="list-style-type: none"> ● The compliance report for CREP guidelines for cement plant is enclosed as Annexure - V.
ix.	Proper housekeeping shall be taken up. Regular annual medical examination of all the employees shall be carried out from the occupational health point of view and records maintained.	Being complied. <ul style="list-style-type: none"> ● Proper housekeeping is maintained in the plant premises. ● 3 Nos. of road sweepers and 2 Nos. of industrial vacuum cleaners are being used for better housekeeping. ● Occupational health checkup is being carried for all the employees and records are being maintained.
x.	A separate environmental management cell to carry out various management and monitoring functions shall be set up under the control of Senior Executive.	Complied. <ul style="list-style-type: none"> ● Separate environmental management cell is carrying out monitoring functions. ● The organization chart of environmental cell is enclosed as Annexure - XI.
xi.	Occupational health surveillance programme shall be done on a regular basis and records maintained. The programme must include lung function and sputum analysis tests once in six months.	Being complied. <ul style="list-style-type: none"> ● Occupational health checkup is being carried for all the employees, covering lung function and sputum analysis tests also. ● Occupational health surveillance programme is being carried for the employees regularly and records are being maintained. Occupational Health Centre (with qualified Occupational Health Specialist with supporting staff) is established with the following facilities: <ul style="list-style-type: none"> ○ X-ray ○ ECG ○ Spirometry (lung function test) ○ Audiometry ○ Semi-auto analyser to carryout biochemical tests ○ Clinical lab for micro-biological tests (including sputum test) ○ Checking colour blindness ○ Ambulance
xii.	As proposed, Rs. 2.00 Crores and Rs. 2.50 Crores shall be earmarked towards the total capital cost and recurring cost/annum for	Being complied. <ul style="list-style-type: none"> ● Earmarked funds so provided are not being diverted for any other purposes. ● Rs. 218 lakh spent towards the total capital

S.No.	Condition	Compliance Status
	<p>environmental pollution control measures and shall be suitably used to implement the conditions stipulated by the Ministry of Environment and Forests as well as the State Government. Rs. 25.00 Lakhs and Rs. 25.00 Lakhs earmarked towards EMP / greenbelt and occupational health per annum and Rs. 50.00 Lakhs earmarked for corporate social responsibility shall be judiciously utilized and regular report shall be submitted to the Regional Office of this Ministry at Bangalore. The funds so provided shall not be diverted for any other purpose.</p>	<p>cost for environmental pollution control measures at the time of modernization.</p> <ul style="list-style-type: none"> ● Rs. 431 lakh spent on new air pollution control equipment in the financial year 2016-2017 as part of the Line – I expansion project. ● Greenbelt expenditure in the financial year 2023-2024 is Rs. 102.179 lakh with respect to plant, colony, mining lease areas and nearby areas. ● Rs. 2996.3547 lakh spent as recurring cost and Rs. 97.4472 lakh spent on capital cost in the financial year 2023-2024 respectively, for various environmental protection measures associated with plant & mines. ● Details of expenditure for environmental protection measures are being submitted along with half-yearly compliance reports to the Ministry regularly. ● Rs. 1611.20 lakh is allocated for Environment Management Activities for the financial year 2024-2025 towards capital & recurring costs for plant & mines and being spent.
xiii.	<p>The Regional Office of this Ministry at Bangalore / CPCB / APPCB shall monitor the stipulated conditions. A six monthly compliance report and the monitored data along with statistical interpretation shall be submitted to them regularly.</p>	<p>Being complied. This compliance report along with statistical interpretation of monitored data is submitted as per this stipulation. Vide Notice from MoEF&CC, Chennai dated 13.08.2019, this copy of half-yearly compliance report is mailed to ecompliance-ap@gov.in.</p>
xiv.	<p>The Project Authorities shall inform the Regional Office as well as the Ministry, the date of financial closure and final approval of the project by the concerned authorities and the date of commencing the land development work.</p>	<p>Noted. Date of financial closure for this project is not required as total funding for this project is from own funds.</p>
xv.	<p>The Project proponent shall inform the public that the project has been accorded environmental clearance by the Ministry and copies of the clearance letter are available with the AP Pollution Control Board and may also be seen at Website of the Ministry of Environment and Forests at http://envfor.nic.in. This shall be advertised within seven days from the</p>	<p>Complied. Published the same in 11.06.2009 Eenadu (Telugu) & The Hindu (English) newspapers and copy submitted to Regional Office, Ministry.</p>

S.No.	Condition	Compliance Status
	date of issue of the clearance letter at least in two local newspapers that are widely circulated in the region of which one shall be in the vernacular language of the locality concerned and a copy of the same shall be forwarded to the Regional office at Bangalore.	



(Signature)

HALF-YEARLY COMPLIANCE REPORT

Environmental Clearance Letter/s No. and Date	J-11011/403/2006-IA-II (I) and 07.02.2007
Name of the Project	The Ramco Cements Limited, Cement Plant – 2.5 Million TPA Clinker, 2.6 Million TPA Cement & Thermal Power Plant – 36 MW
Period of Compliance Report	April 2024 to September 2024

A. Specific Conditions:

S.No.	Condition	Compliance Status
i.	The gaseous and particulate matter emissions from various units shall conform to the standards prescribed by the A.P. Pollution Control Board. At no time, the particulate emissions from the cement plant shall exceed 50 mg/Nm ³ . The emissions from CPP shall be less than 100 mg/Nm ³ . Continuous on-line monitors for particulate emissions shall be carried out as per the recommendations of the CREP guidelines and on-line data shall be submitted to the APPCB and CPCB regularly. Interlocking facility shall be provided in the pollution control equipment so that in the event of the pollution control equipment not working, the respective unit(s) is shutdown automatically.	Being complied. <ul style="list-style-type: none"> • Efforts are being made to control particulate matter emissions from stacks within the prescribed limit. • All the air pollution control equipment for cement plant Line – I & II are designed for particulate emission standard of 30 mg/Nm³ and cement plant Line – III are designed for particulate emission standard of 20 mg/Nm³. • All the air pollution control equipments for TPP are designed for particulate emission standard of 50 mg/Nm³. • As our pyritic sulphur in limestone is less than 0.25%, our SO₂ standard for Kiln – I, II & III is 100 mg/Nm³. The sulphur content is absorbed in clinker and the emission levels are well within the limit. • Low NOx burners and low NOx calciners are installed for Kiln – I, II & III to meet the NOx standard of 600 mg/Nm³ for Kiln – I & III and 800 mg/Nm³ for Kiln – II respectively. • 13 Nos. of online monitors are installed to measure particulate emissions for stacks (as per CREP guidelines) and linked up with APPCB and CPCB websites. • In the event of pollution control equipment not working, the respective unit(s) gets stopped automatically in phased manner with associated interlocks.
ii.	Ambient air quality including ambient noise levels shall not exceed the standards stipulated under EPA or by the State authorities. Monitoring of ambient air quality and stack emissions shall be carried out	Being complied. <ul style="list-style-type: none"> • Reports of ambient air quality and stack emissions monitoring (manual) submitted to the APPCB, regularly once in a month. Consolidated data to MoEF&CC, Integrated Regional Office, Vijayawada and APPCB along with half-yearly compliance reports.

S.No.	Condition	Compliance Status
	regularly in consultation with APPCB and report submitted to the APPCB quarterly and to the Ministry's Regional Office at Bangalore half-yearly. One ambient air quality monitoring station shall be installed in downwind direction.	<ul style="list-style-type: none"> • Compiled data of stack monitoring and ambient air quality collected by MoEF&CC approved external laboratory (manually) on monthly basis for the period April 2024 to September 2024 is enclosed as Annexure – II & III respectively. • These stations are selected covering all directions of cement plant. • Ambient noise levels are being monitored during day and night time and records are being maintained.
iii.	The company shall install adequate dust collection and extraction system to control fugitive dust emissions at various transfer points, raw mill handling (unloading, conveying, transporting, stacking), vehicular movement, bagging and packing areas etc. Bag filters will be provided in the kiln / raw mill and coal mill and ESP to AFBC boilers and coolers to control air emissions less than 50 mg/Nm ³ . The dust collected from the pollution control equipments shall be recycled back into the process. Storage of raw material shall be in closed roof sheds. Water spray system shall be provided all around the coal stockpiles and dust suppression system around the coal conveyor system	<p>Complied.</p> <ul style="list-style-type: none"> • Following air pollution control equipment are in operation in the present operating cement plant, thermal power plant & Ramco Budawada Limestone Mine (RF) to control process as well as fugitive emissions from all vulnerable sources, etc.: <ul style="list-style-type: none"> ○ 166 Nos. of RABH / Bag Houses / Bag Filters ○ 5 Nos. of ESPs ○ 6 Nos. of Water Fogging Systems • 1 No. of bag filter is in erection and commissioning stage. This will be commissioned along with associated process equipment. • All the air pollution control equipment for cement plant Line – I & II are designed for particulate emission standard of 30 mg/Nm³ and cement plant Line – III are designed for particulate emission standard of 20 mg/Nm³. • All the air pollution control equipments for TPP are designed for particulate emission standard of 50 mg/Nm³. • The dust collected from all APCEs is being totally recycled to the respective process / storage facility. • All the packing machines are fitted with bag filters. • Covered sheds for storage of raw materials (including limestone) and fully covered conveyers for transportation of materials are made for coal and other raw materials. • Cement, fly ash and clinker are being stored in silos. • Fly ash (brought from outside) is transported through closed bulkers and is unloaded / conveyed through pneumatic system. • The fly ash generated from TPP is conveyed

S.No.	Condition	Compliance Status
		<p>through pneumatic system and is used in cement plant.</p> <ul style="list-style-type: none"> • Water spray system arranged around the coal stacker & reclaimer. • Water fogging system is also installed at limestone crusher hoppers. • 3 Nos. of road sweepers and 2 Nos. of industrial vacuum cleaners are being used for dust removal. The removed / collected dust is being reused in the respective process.
iv.	Asphalting / concreting of roads and water spray all around the coal stockpiles shall be carried out to control fugitive emissions.	<p>Being complied.</p> <ul style="list-style-type: none"> • All major roads of the plant (including road around coal stacker / reclaimer) are paved with concrete. • Water sprinkling system is installed around the coal stockpile and water sprinkling is being carried out with truck mounted tanker on roads of cement plant to control fugitive emissions.
v.	<p>Total water requirement from the ground water source shall not exceed 5,519.60 m³/d and prior permission for the drawl of ground water from the SGWB / CGWA shall be obtained. No process wastewater shall be discharged due to its use either in the process or evaporation. All the treated wastewater shall be recycled and reused for ash conditioning, dust suppression, greenbelt development and other plant related activities etc. No effluent shall be discharged outside the factory premises and 'zero' discharge shall be adopted. Domestic effluent shall be used after treatment in Sewage Treatment Plant (STP) for greenbelt development within the plant and colony area.</p>	<p>Being complied.</p> <ul style="list-style-type: none"> • Permission obtained from Panchayat Raj & Rural Development Department (nodal agency for Central Ground Water Department) vide Lr. No. PRR05-11028/45/2018-SLNA-GIS-CORD dated 13.11.2021, which is valid up to 12.11.2024 for drawl of 7000 m³/day water from the available quantity of water from the mine de-watering only. Renewal application submitted on 23.08.2024. • No process effluents generation from cement manufacturing. • TPP effluent such as DM wastewater, boiler blow down are being treated in effluent treatment plant and reused. The cooling water blowdown is recycled and reused. Only make up water is added. • Sewage treatment plant is in operation to treat domestic sewage from colony, office, canteen and plant. • Auto garage wash water is being treated separately at Oil & Grease Trap. • Compiled data of TPP ETP, Oil & Grease Trap and STP outlet samples analysis carried out by MoEF&CC approved agency (on monthly basis) for the period April 2024 to September 2024 is enclosed as Annexure – VI, VII & X respectively. • These treated effluents are used for greenbelt, water sprinkling & partially for process activities.

S.No.	Condition	Compliance Status
		<ul style="list-style-type: none"> • The excess treated waste water, if any, is being passed to pond in our own lands to uplift the water table in the nearby area. • With all these measures, 'zero discharge' is being maintained.
vi.	The company must harvest the rainwater from the roof tops and storm water drains to recharge the ground water. The company must also collect rain water in the mined out pits of captive lime stone mine and use the same water for the various activities of the project to conserve fresh water.	<p>Being complied.</p> <ul style="list-style-type: none"> • 48 Nos. & 4 Nos. of rain water harvesting structures are made to recharge the ground water in the colony & plant respectively by September 2024 (Annexure – XIII). • Water collected in mine pits is being used for cement plant, for thermal power plant, mines & for domestic uses. • Treated waste water from STP, ETP and Oil & Grease Trap is used for greenbelt, water sprinkling and partially for process activities.
vii.	As proposed in EIA / EMP, greenbelt shall be developed in 172.7 ha (60%) out of total 248 ha. land in consultation with the local DFO as per the CPCB guidelines.	<p>Being complied.</p> <ul style="list-style-type: none"> • Greenbelt is developed in an area of 130.24 ha by March 2024, out of 248 ha by planting different species including native species. This condition is modified in the latest Environmental Clearance issued for Cement Plant expansion project [No. J-11011/403/2006-IA-II (I) dated 29th September, 2016], as point No. vi of specific conditions: <ul style="list-style-type: none"> ○ A greenbelt of 130.24 ha (52.5 % of 248.08 ha) as on 30.11.2014 has been developed, which should be maintained as it is. • Emphasis is being made to maintain 130.24 ha greenbelt area in and around plant premises and for planting dust capturing plants in consultation with local DFO to mitigate the effects of air emissions.
viii.	All the cement dust collected from pollution control devices shall be recycled and reutilized in the process. The entire ash generated from the power plant will be pneumatically conveyed to the cement plant and used for manufacturing of PPC. Hazardous waste viz. spent oil from gear boxes and automatic batteries etc. shall be properly stored in a designated area and sold to authorized recyclers / reprocessors.	<p>Being complied.</p> <ul style="list-style-type: none"> • The dust collected from air pollution control equipment is being recycled in the respective process, totally. • The fly ash generated from TPP is transported pneumatically and is used in manufacturing of cement. • Disposing waste lead acid batteries to APEMC authorized recyclers / re-processors properly, by storing in a designated area. • Waste oil (stored in a tank of capacity 3.5 kL) along with fresh fuel is being used for kiln firing while light up & for reclaimer lubrication and / or sold to APEMC authorized agents.
ix.	The company shall undertake eco-	Being complied.

S.No.	Condition	Compliance Status										
	development measures including community welfare measures in the project area.	<ul style="list-style-type: none"> Contributed Rs. 15 lakh for development of Butterfly Park at Mulapadu Village, NTR District. CSR activities are being carried out for upliftment of local areas and account is being maintained. These include village-wise, sector-wise (Health, Education, Sanitation, Health, Skill Development and infrastructure requirements such as strengthening of village roads, avenue plantation, etc). Any request from Village Committees in their respective villages, schools & hospitals are being fulfilled by necessary budgetary allocation in phased manner, as per priority basis. 										
x.	Present requirement of limestone shall be sourced from the Ravirala Forest Mine only for which environmental clearance has been accorded by the Ministry on 16 th October, 2002. The limestone required in future shall be sourced from the captive limestone mine for which prior environmental clearance has been accorded by the Ministry.	<p>Being complied.</p> <ul style="list-style-type: none"> Limestone is being sourced from Captive mines, for which EC are obtained. The details are: <table border="1"> <thead> <tr> <th>Mine Name</th> <th>EC approved capacity, Million TPA</th> </tr> </thead> <tbody> <tr> <td>Jayanthipuram Limestone Mine (North Band)</td> <td>1.80</td> </tr> <tr> <td>Jayanthipuram Limestone Mine (South Band)</td> <td>1.75</td> </tr> <tr> <td>Ravirala Limestone Mine (RF)</td> <td>2.75</td> </tr> <tr> <td>Ramco Budawada Limestone Mine (RF)</td> <td>2.50</td> </tr> </tbody> </table> <ul style="list-style-type: none"> Limestone is sourced from Ravirala Limestone Mine (RF) and other captive limestone mines, after obtaining prior environmental clearances from Ministry only. 	Mine Name	EC approved capacity, Million TPA	Jayanthipuram Limestone Mine (North Band)	1.80	Jayanthipuram Limestone Mine (South Band)	1.75	Ravirala Limestone Mine (RF)	2.75	Ramco Budawada Limestone Mine (RF)	2.50
Mine Name	EC approved capacity, Million TPA											
Jayanthipuram Limestone Mine (North Band)	1.80											
Jayanthipuram Limestone Mine (South Band)	1.75											
Ravirala Limestone Mine (RF)	2.75											
Ramco Budawada Limestone Mine (RF)	2.50											
xi.	All the recommendations of the CREP guidelines shall be strictly followed.	<p>Being implemented.</p> <ul style="list-style-type: none"> CREP guidelines are being followed. Compliance report for CREP guidelines for cement plant is enclosed as Annexure - V. 										

B. General Conditions:

S.No.	Condition	Compliance Status
i.	The project authority must adhere to the stipulations made by AP State Pollution Control Board (APPCB) and State Government.	<p>Being complied.</p> <ul style="list-style-type: none"> Combined Consent To Operate is obtained from APPCB vide order No. APPCB/VJA/VJA/488/HO/CFO/2017- dated 02.11.2021. Vide order No. APPCB/VJA/VJA/488

S.No.	Condition	Compliance Status								
		<p>/HO/CFO/2017- dated 02.12.2021 CTO validity is extended to 31.01.2027.</p> <ul style="list-style-type: none"> Obtained Consent To Operate amendment order from APPCB to utilize various hazardous / non-hazardous wastes as fuel in cement plant kilns as co-processing to achieve best practice norms vide order No. APPCB/VJA/VJA/488/ CTO/HO/2019- dated 30.11.2022. 								
ii.	<p>No further expansion or modification of the plant shall be carried out without prior approval of this Ministry.</p>	<p>Being complied.</p> <p>The status of EC orders from Ministry for expansion projects (after this EC) is as follows:</p> <table border="1" data-bbox="815 658 1430 1330"> <thead> <tr> <th data-bbox="815 658 1193 696">Project</th> <th data-bbox="1193 658 1430 696">ToR / EC details</th> </tr> </thead> <tbody> <tr> <td data-bbox="815 696 1193 860">Modernization and up-gradation project to produce 2.80 MTPA clinker & 3.65 MTPA cement</td> <td data-bbox="1193 696 1430 860">EC No. J-11011/403/2006-IA II (I) dated 09.06.2009</td> </tr> <tr> <td data-bbox="815 860 1193 1055">Increase of clinker production from 2.80 MTPA to 3.185 MTPA & for installation 6 MW Turbo Generator</td> <td data-bbox="1193 860 1430 1055">EC No. J-11011/403/2006-IA-II (I) dated 29.09.2016</td> </tr> <tr> <td data-bbox="815 1055 1193 1330">Increase of clinker production from 3.185 MTPA to 4.685 MTPA & installation of 27 MW Waste Heat Recovery System by installation of 7 Nos. of boilers</td> <td data-bbox="1193 1055 1430 1330">EC No. J-11011/403/2006-IA-II (I) dated 18.12.2019</td> </tr> </tbody> </table>	Project	ToR / EC details	Modernization and up-gradation project to produce 2.80 MTPA clinker & 3.65 MTPA cement	EC No. J-11011/403/2006-IA II (I) dated 09.06.2009	Increase of clinker production from 2.80 MTPA to 3.185 MTPA & for installation 6 MW Turbo Generator	EC No. J-11011/403/2006-IA-II (I) dated 29.09.2016	Increase of clinker production from 3.185 MTPA to 4.685 MTPA & installation of 27 MW Waste Heat Recovery System by installation of 7 Nos. of boilers	EC No. J-11011/403/2006-IA-II (I) dated 18.12.2019
Project	ToR / EC details									
Modernization and up-gradation project to produce 2.80 MTPA clinker & 3.65 MTPA cement	EC No. J-11011/403/2006-IA II (I) dated 09.06.2009									
Increase of clinker production from 2.80 MTPA to 3.185 MTPA & for installation 6 MW Turbo Generator	EC No. J-11011/403/2006-IA-II (I) dated 29.09.2016									
Increase of clinker production from 3.185 MTPA to 4.685 MTPA & installation of 27 MW Waste Heat Recovery System by installation of 7 Nos. of boilers	EC No. J-11011/403/2006-IA-II (I) dated 18.12.2019									
iii.	<p>At least four ambient air quality monitoring stations shall be established in the downward direction as well as where maximum ground level concentration of SPM, SO₂ and NO_x are anticipated in consultation with the APPCB. Data on ambient air quality and stack emissions shall be regularly submitted to this Ministry including its Regional Office at Bangalore and APPCB once in six months.</p>	<p>Being complied.</p> <ul style="list-style-type: none"> 3 Nos. of ambient air quality monitoring stations are established near to plant boundary (including in the downward direction as well as where maximum ground level concentration of SPM, SO₂ and NO_x are anticipated) and 9 Nos. of ambient air quality monitoring stations are established in nearby villages. Monthly stack & ambient air quality monitoring data are being submitted to APPCB on regular basis. Compiled data of stack monitoring and ambient air quality monitoring carried out by MoEF&CC approved agency on monthly basis for the period April 2024 to September 2024 is enclosed as Annexure – II & III respectively. 								

S.No.	Condition	Compliance Status
		<ul style="list-style-type: none"> • Half-yearly compliance reports are being submitted to APPCB. • Half-yearly compliance reports submitted to the Regional Office of Ministry located at Chennai on regular basis (up to the period October 2018 to March 2019). Vide Notice from MoEF&CC, Chennai dated 13.08.2019, this copy of half-yearly compliance report is mailed to ecompliance-ap@gov.in.
iv.	<p>Industrial wastewater shall be properly collected, treated so as to conform to the standards prescribed under GSR 422 (E) dated 19th May, 1993 and 31st December, 1993 or as amended from time to time. The treated wastewater shall be utilized for plantation purpose.</p>	<p>Being complied.</p> <ul style="list-style-type: none"> • Cement manufacturing does not generate process effluents. • TPP effluent is being treated in effluent treatment plan. • Sewage treatment plant is installed to treat domestic effluent from office, canteen, plant and colony. • Auto garage wash water is being treated separately at Oil & Grease Trap. • Compiled data of TPP ETP, Oil & Grease Trap and STP outlet samples analysis carried out by MoEF&CC approved agency (on monthly basis) for the period April 2024 to September 2024 is enclosed as Annexure – VI, VII & X respectively. • The treated wastewater is being used for greenbelt, water sprinkling and partially for process. • The excess treated waste water, if any, is being passed to ponds (around 0.5 ha & 0.15 ha) in our own lands to uplift the water table in the nearby area.
v.	<p>The overall noise levels in and around the plant area shall be kept well within the standards (85 dBA) by providing noise control measures including acoustic hoods, silencers, enclosures etc. on all sources of noise generation. The ambient noise levels shall conform to the standards prescribed under Environmental (Protection) Act, 1986 Rules, 1989 viz. 75 dBA (day time) and 70 dBA (night time).</p>	<p>Being complied.</p> <ul style="list-style-type: none"> • Providing noise control measures including acoustic hoods, silencers, enclosures etc. at all sources of higher noise generation. • Efforts are made to achieve noise levels within norms. Ambient noise levels are being monitored during day and night time and records are being maintained.
vi.	<p>Proper housekeeping and adequate occupational health programmes must be taken up. Occupational Health Surveillance programme</p>	<p>Being complied.</p> <ul style="list-style-type: none"> • Proper housekeeping is maintained in the plant premises.

S.No.	Condition	Compliance Status
	shall be done on a regular basis and records maintained. The programme must include lung function and sputum analysis tests once in six months.	<ul style="list-style-type: none"> • 3 Nos. of road sweepers and 2 Nos. of industrial vacuum cleaners are being used for better housekeeping. • Occupational health surveillance programme is being carried for the employees regularly and records are being maintained. • Occupational Health Centre (with qualified Occupational Health Specialist with supporting staff) is established with the following facilities: <ul style="list-style-type: none"> ○ X-ray ○ ECG ○ Spirometry (lung function test) ○ Audiometry ○ Semi-auto analyser to carryout bio-chemical tests ○ Clinical lab for micro-biological tests (including sputum test) ○ Checking colour blindness ○ Ambulance
vii.	The project proponent shall also comply with all the environmental protection measures and safeguards recommended in the EIA / EMP.	<p>Being complied.</p> <ul style="list-style-type: none"> • Air pollution control equipments are established as per EIA / EMP report and are being maintained properly. • Sewage treatment plant to treat plant, colony & office sewage; effluent treatment plant to treat thermal power plant effluents and oil & grease trap to treat auto garage effluent are established and are being operated as proposed in EIA / EMP. • The treated effluents & sewage is used for greenbelt development, water sprinkling activities and partially for process activities. • Socio-economic measures are being carried out as per EIA / EMP reports, for upliftment of nearby areas.
viii.	A separate environmental management cell with full-fledged laboratory facilities to carry out various management and monitoring functions shall be set up under the control of Senior Executive.	<p>Being complied.</p> <p>Separate environmental management cell is carrying out monitoring functions. The organization chart of environmental cell is enclosed as Annexure - XI.</p>
ix.	As mentioned in the EIA / EMP, Rs. 16.35 Crores and Rs. 10.00 Crores kept towards the total cost and recurring cost / annum for	<p>Being complied.</p> <ul style="list-style-type: none"> • Earmarked funds so provided are not being diverted for any other purposes.

S.No.	Condition	Compliance Status
	<p>implementing environmental pollution control measures shall be judiciously used to implement the conditions stipulated by the Ministry of Environment and Forests as well as the State Government along with the implementation schedule for all the conditions stipulated herein. The funds so provided should not be diverted for any other purposes.</p>	<ul style="list-style-type: none"> • Rs. 1635 lakh spent towards total cost of various pollution control equipment for cement plant Line – II & thermal power plant Line – II at the time of installation of plant. • Rs. 431 lakh spent on new air pollution control equipment in the financial year 2016-17 as part of the Line – I expansion project. • Greenbelt expenditure in the financial year 2023-2024 is Rs. 102.179 lakh with respect to plant, colony, mining lease areas and nearby areas. • Rs. 2996.3547 lakh spent as recurring cost and Rs. 97.4472 lakh spent on capital cost in the financial year 2023-2024 respectively, for various environmental protection measures associated with plant & mines. • Details of expenditure for environmental protection measures are being submitted to the Ministry along with half-yearly compliance reports regularly. • Rs. 1611.20 lakh is allocated for Environment Management Activities for the financial year 2024-2025 towards capital & recurring costs for plant & mines and being spent.
x.	<p>The Regional Office of this Ministry at Bangalore / Central Pollution Control Board / AP Pollution Control Board shall monitor the stipulated conditions. A six monthly compliance report and the monitored data along with statistical interpretation should be submitted to them regularly.</p>	<p>Being complied.</p> <ul style="list-style-type: none"> • This is being submitted as part of six-month compliance report with required statistical interpretations of monitored data. • Half-yearly compliance reports are being submitted to APPCB. • Half-yearly compliance reports submitted to the Regional Office of Ministry located at Chennai on regular basis (up to the period October 2018 to March 2019). Vide Notice from MoEF&CC, Chennai dated 13.08.2019, this copy of half-yearly compliance report is mailed to ecompliance-ap@gov.in.
xi.	<p>The Project Authorities should inform the Regional Office as well as the Ministry, the date of financial closure and final approval of the project by the concerned authorities and the date of commencing the land development</p>	<p>Noted. Date of financial closure for this project is not required as total funding for this project is from own funds.</p>

S.No.	Condition	Compliance Status
	work.	
xii.	The Project Proponent shall inform the public that the project has been accorded environmental clearance by the Ministry and copies of the clearance letter are available with the AP Pollution Control Board / Committee and may also be seen at Website of the Ministry of Environment and Forests at http://envfor.nic.in . This shall be advertised within seven days from the date of issue of the clearance letter at least in two local newspapers that are widely circulated in the region of which one shall be in the vernacular language of the locality concerned and a copy of the same should be forwarded to the Regional office.	Complied. Advertised in "Eenadu" Telugu daily and "The Hindu" English daily on 14-02-2007. Copy of the same is forwarded to MOEF, RO, Bangalore vide Lr. No. LAB/PCB/10836/2007 dated 20-02-2007.



(Signature)

THE RAMCO CEMENTS LIMITED, KSR NAGAR
FUGITIVE DUST MONITORING - PLANT
PERIOD - APRIL 2024 TO SEPTEMBER 2024

S. No	Location	Suspended Particulate Matter Concentration, ug/m3	
		Jun-24	Sep-24
1	Coal Mill - I area	116.6	124.20
2	Coal Mill - II area	125.0	143.6
3	Coal Mill - III area	138.9	154.7
4	Cooler - I area	97.2	87.5
5	Cooler - II area	88.9	92.5
6	Cooler - II area	69.4	75.4
7	Packing Plant area	194.4	210.4
8	Cement Plant (Mills) area	194.4	212.6
9	DG House area	166.7	178.1
10	Pump House area	180.5	190.3
11	Cooler stack area	178.6	145.8
12	Limestone stacker area	155.5	204.3
13	TPP Boiler area	88.9	110.4
14	CCR of Thermal Power Plant area	122.2	134.7
15	CCR of Cement Plant area	189.0	153.5
16	Line - III Bag House area	175.0	145.9

THE RAMCO CEMENTS LIMITED, KSR NAGAR
STACK MONITORING DATA

PERIOD - APRIL 2024 TO SEPTEMBER 2024

S. No.	Stack Attached to	Month							Average	Norm
		Apr-24	May-24	Jun-24	Jul-24	Aug-24	Sep-24			
i. PM Concentration, mg/Nm³										
1	Kiln - I Bag House	23.2	22	23	28.1	26.5	23.8	24.4	30	
2	Coal Mill - I Bag House	6.12	8.81	8.7	9.3	8.68	14	9.3	30	
3	Cooler - I - ESP	10.1	11.8	15.6	12.7	10.8	11.1	12.0	30	
4	Kiln - II RABH	27.2	26.6	14.2		13.4	20.5	20.4	30	
5	Coal Mill - II Bag House	12.6	11.2	9.8		12.2	13.3	11.8	30	
6	Cooler - II - ESP	26.5	26.7	23.5		21.6	14.7	22.6	30	
7	Kiln - III Bag House	15.6	16.5	10.1		10.4	16.5	13.8	20	
8	Coal Mill - III Bag House	17.4	15.5	7.9		5.02	12.5	11.7	20	
9	Cooler - III - ESP	12.6	14.6	14.2		11	17.3	13.9	20	
10	Cement Mill Separator Bag House	15.4					18.1	16.8	30	
11	Cement Mill Vent Bag Filter	10.6					15.2	12.9	30	
12	Slag Mill Bag House	10.6	5.1	13.9	6.02	13.3	10.2	9.9	30	
13	JPM Limestone Crusher Bag Filter	5.92	5.73	7.9		6.16	19.6	9.1	30	
14	Budawada - Limestone Crusher Bag Filter	11.2				15.2	16.1	14.2	30	
15	Thermal Power Plant ESPs	26.7	33.2	28.4	29.5	26.9	13.7	26.4	50	
ii. SO₂ Concentration, mg/Nm³										
1	Kiln - I Bag House	BDL	BDL	BDL	BDL	BDL	BDL	BDL	100	
2	Kiln - II RABH	BDL	BDL	BDL	BDL	BDL	BDL	BDL	100	
3	Kiln - III Bag House	BDL	BDL	BDL	BDL	BDL	BDL	BDL	100	
4	Thermal Power Plant ESPs	545	436	511	517	534	108	441.8	600	
iii. NOx Concentration, mg/Nm³										
1	Kiln - I Bag House	462	399	510	347	482	596	466.0	600	
2	Kiln - II RABH	396	383	342		421	240	356.4	800	
3	Kiln - III Bag House	372	335	384		284	155	306.0	600	
4	Thermal Power Plant ESPs	276	258	269	246	418	148	269.2	450	

THE RAMCO CEMENTS LIMITED, KSR NAGAR
AMBIENT AIR QUALITY MONITORING DATA - CEMENT PLANT
PERIOD - APRIL 2024 TO SEPTEMBER 2024

Month	Near Temple				Near Slag Shed				Near Mines Office			
	PM ₁₀	PM _{2.5}	SO ₂	NOx	PM ₁₀	PM _{2.5}	SO ₂	NOx	PM ₁₀	PM _{2.5}	SO ₂	NOx
Apr-24	75.1	32.9	17.3	26.8	68.4	27.3	19.1	22.3	68.3	29.8	17.2	21.9
May-24	78.6	34.5	18.9	28.3	71.3	29.6	20.6	25.4	73.9	30.2	19.7	23.9
Jun-24	83.5	33.1	19.2	29.1	78.6	27.2	22.3	23.2	75.9	32.3	18.3	21.6
Jul-24	72.1	25.1	15.3	18.2	69.3	24.0	16.2	20.6	70.6	24.8	14.9	17.9
Aug-24	75.3	26.9	16.3	20.4	74.8	23.6	16.5	20.9	72.9	22.9	15.3	18.6
Sep-24	70.2	20.9	14.6	22.3	66.3	21.4	14.1	21.4	64.9	20.6	13.9	17.6

Note: All values are mentioned in $\mu\text{g}/\text{m}^3$

THE RAMCO CEMENTS LIMITED, KSR NAGAR
AMBIENT AIR QUALITY MONITORING DATA - BUFFER ZONE VILLAGES
PERIOD - April 2024 to September 2024

Location	Parameter	Month												Limit						
		April 2024			May 2024			June 2024			July 2024				August 2024			September 2024		
		I FORT	II FORT	NIGHT	I FORT	II FORT	NIGHT	I FORT	II FORT	NIGHT	I FORT	II FORT	NIGHT		I FORT	II FORT	NIGHT	I FORT	II FORT	NIGHT
Dharmavarapupadu Tanda	PM 10	59.7	63.6	58.3	65.6	62.6	68.3	51.3	49.6	49.2	51.2	48.2	53.1	100						
	PM 2.5	24.2	25.6	23.7	26.4	25.4	27.5	20.8	20.0	20.0	20.6	19.6	21.4	60						
	SO ₂	16.1	15.3	16.8	16.2	15.3	17.8	10.6	9.6	12.3	10.6	10.6	11.4	80						
Jayanthipuram	NO _x	18.7	18.0	19.4	18.9	17.9	20.5	13.2	12.3	14.9	13.3	13.2	14.1	80						
	CO	292.0	221.0	299.0	232.0	312.0	241.0	296.0	241.0	301.0	162.0	296.0	150.0	2000						
	PM 10	63.9	62.9	65.2	63.6	68.3	70.2	49.6	50.3	50.6	53.6	51.2	52.4	100						
Jayanthipuram	PM 2.5	25.6	25.7	26.1	25.9	27.4	28.6	19.9	20.5	20.3	21.9	20.5	21.4	60						
	SO ₂	16.9	16.2	17.3	16.3	18.3	18.3	12.3	12.3	13.1	12.3	12.9	13.5	80						
	NO _x	19.8	19.1	20.2	19.2	21.2	21.2	15.2	15.2	16.0	15.2	15.8	16.4	80						
Chillakallu	CO	281.0	241.0	296.0	248.0	286.0	252.0	13.8	252.0	326.0	154.0	324.0	149.0	2000						
	PM 10	62.6	58.6	65.1	60.3	67.9	66.1	42.3	48.4	49.8	49.6	48.3	48.3	100						
	PM 2.5	25.3	23.7	26.3	24.4	27.4	26.8	17.1	19.6	20.1	20.1	19.5	19.6	60						
K.Agraharam Village	SO ₂	14.3	20.2	15.2	21.2	19.6	17.2	11.1	11.6	12.6	11.6	11.6	11.9	80						
	NO _x	17.0	23.3	17.9	24.3	22.3	20.3	13.8	14.7	15.3	14.7	14.3	15.0	80						
	CO	274.0	216.0	281.0	226.0	274.0	239.0	291	239.0	310	263.0	318.0	242.0	2000						
Jaggayyapet	PM 10	62.8	55.2	63.9	58.9	65.1	59.3	50.4	52.6	50.3	52.8	52.4	50.4	100						
	PM 2.5	25.3	22.5	25.8	24.0	26.2	24.2	20.3	21.5	20.3	21.5	21.1	20.6	60						
	SO ₂	15.4	21.4	16.3	22.3	18.4	19.1	10.9	13.1	12.9	12.9	10.8	12.4	80						
Budawada	NO _x	18.5	23.8	19.4	24.7	21.5	21.5	14	15.0	16	15.3	13.9	14.8	80						
	CO	261.0	244.0	269.0	245	301.0	255.0	274	255.0	336	149.0	326.0	151.0	2000						
	PM 10	66.1	58.3	68.4	56.2	72.3	58.2	50.9	50.3	52.6	48.2	51.6	49.3	100						
Vedadri	PM 2.5	27.2	23.6	28.1	22.7	29.7	23.5	20.9	20.3	21.6	19.5	21.2	19.9	60						
	SO ₂	16.2	19.2	15.9	21.4	17.1	22.3	10.7	10.2	13.2	10.6	12.6	11.6	80						
	NO _x	18.6	22.2	18.3	24.4	19.5	25.3	13.1	13.2	15.6	13.6	15.0	14.6	80						
Pochampalli	CO	268.0	212.0	288.0	232.0	293.0	248.0	256.0	248.0	324	254.0	313.0	248.0	2000						
	PM 10	65.2	61.4	66.3	63.1	62.9	62.1	47.3	49.8	43.8	50.6	45.9	48.4	100						
	PM 2.5	25.8	25.2	26.2	25.9	24.8	25.5	18.7	20.5	17.3	20.8	18.1	19.9	60						
Ravirala	SO ₂	16.6	16.3	17.2	17.3	17.9	18.4	10.1	9.8	12.6	12.8	10.3	12.3	80						
	NO _x	19.4	18.9	20.0	19.9	20.7	21.0	12.9	12.4	15.4	15.4	13.1	14.9	80						
	CO	284.0	239.0	291.0	249	312.0	255.0	63.0	255.0	309	216.0	302.0	218.0	2000						
Ravirala	PM 10	63.9	67.2	64.6	69.2	69.1	68.3	45.6	51.6	46.9	51.3	44.3	50.6	100						
	PM 2.5	26.1	26.7	26.4	27.5	28.2	27.2	18.6	20.5	19.1	20.4	18.1	20.1	60						
	SO ₂	16.1	18.4	16.9	19.2	15.4	21.4	10.2	12.4	11.9	12.1	11.4	11.9	80						
Ravirala	NO _x	18.4	21.2	19.2	22	17.7	24.2	12.0	15.2	14	14.9	13.7	14.7	80						
	CO	277.0	259.0	283.0	262	287.0	274.0	242.0	274.0	256	281.0	289.0	274.0	2000						
	PM 10	61.6	59.1	67.2	61.2	63.2	59.6	43.8	47.3	45.2	49.2	42.9	47.3	100						
Ravirala	PM 2.5	25.2	24.0	27.5	24.8	25.8	24.2	17.9	19.2	18.5	20.0	17.5	19.2	60						
	SO ₂	16.2	17.1	17.3	18.9	16.2	17.3	12.3	10.6	13.6	12.4	12.9	12.6	80						
	NO _x	19.1	19.4	20.2	21.2	19.1	19.6	15.2	12.9	16.5	14.7	15.8	14.9	80						
Ravirala	CO	273.0	256.0	292.0	259	263.0	263.0	258.0	263.0	263	288.0	274.0	279.0	2000						
	PM 10	62.8	58.4	66.9	62.3	70.6	65.2	42.9	45.2	43.6	47.8	41.7	45.6	100						
	PM 2.5	25.6	23.8	27.2	25.4	28.7	26.6	17.5	18.4	17.7	19.5	17.0	18.6	60						
Ravirala	SO ₂	16.9	16.9	17.8	17.4	16.0	18.2	11.1	12.2	12.8	13.2	13.5	11.1	80						
	NO _x	19.9	19.8	20.8	20.3	19.0	21.1	14.1	15.1	15.8	16.1	16.5	14.0	80						
	CO	312.0	274.0	333.0	283	274.0	291.0	212.0	291.0	258	299	261	283.0	2000						

Note: All values are mentioned in µg/m³

The Ramco Cements Limited, Kumarasamy Raja Nagar
 Online Stack Monitoring Data

Period: April 2024 to September 2024

Sl No.	Month	CPP-PM - (mg/Nm3)	STACK_10_CP P-NOx - (mg/Nm3)	CPP-SO2 - (mg/Nm3)	Cementmill_vent-PM - (mg/Nm3)	Klin1-PM - (mg/Nm3)	Klin1-SO2 - (mg/Nm3)	Klin1-NOx - (mg/Nm3)	COOLER1-PM - (mg/Nm3)	COOLER2-PM - (mg/Nm3)	KLIN2-SO2 - (mg/Nm3)	KLIN2-NOX - (mg/Nm3)	KLIN2-PM - (mg/Nm3)	COALMILL1-PM - (mg/Nm3)	Cementmill_s operator-PM - (mg/Nm3)	COALMILL2-PM - (mg/Nm3)	Slagmill-PM - (mg/Nm3)	Klin3-PM - (mg/Nm3)	Klin3-SO2 - (mg/Nm3)	Klin3-NOx - (mg/Nm3)	Cooler3-PM - (mg/Nm3)	CoalMill3-PM - (mg/Nm3)
1	Apr-24	24.4	69.2	189.79	8.48	10.37	35.66	89.59	16.61	15.19	1.78	104.15	18.28	5.35	5.47	10.09	10.34	13.25	23.5	287.74	9.06	7.23
2	May-24	35.86	99.61	250.47	6.76	12.86	28.37	125.08	14.62	12.62	4.98	118.54	17.86	7.2	6.37	5.48	7.01	14.48	17.83	300.88	11.43	7.39
3	Jun-24	35.32	98.12	247.19	5.68	14.63	7.19	77.91	15.57	14.71	0.94	104.24	13.04	8.76	4.25	8.68	7.21	12.36	6.67	271.22	10.65	7.24
4	Jul-24	36.26	100.79	251.96	2.79	10.43	27.7	72.7	7.24	6.86	0	50.5	5.57	7.12	0.8	12.32	7.09	8.84	3.45	188.5	8.58	6.42
5	Aug-24	36.33	100.75	252.01	1.24	11.3	22.82	61.46	5.45	16.37	0	89.11	12.65	7.13	1.73	6.67	5.87	10.91	2.25	196.65	5.02	6.34
6	Sep-24	38.08	105.63	261.75	6.11	14.63	33.9	82.27	10.96	4.91	0	25.5	8.76	14.24	7.13	3.25	5.18	13.01	2.21	263.49	7.69	4.14

**THE RAMCO CEMENTS LIMITED, KSR NAGAR
COMPLIANCE REPORT ON CREP CONDITIONS**

Period: April 2024 to September 2024

1. Implementation of standards in non-complying units.

Complying with the latest notified norms.

2. Plants in critically polluted or urban area (5 km distance outside urban boundary) will meet 100 mg/Nm³ SPM emission.

Not applicable as our cement plant is not located in critically polluted or urban area (5 km distance outside urban boundary). Moreover,

- As per the latest particulate emission norm of 30 mg/Nm³ for cement plants by CPCB (effect from 01.04.2017), upgradation projects are made for some of the air pollution control equipment of cement plant and presently operating the plant with less than 30 mg/Nm³ of PM emissions level.
- The particulate emission norm of 20 mg/Nm³ is defined for our cement plant Line – III.

3. The new cement kilns to be accorded NOC / EC for complying 50 mg/Nm³ emission limit.

- As per the latest particulate emission norm of 30 mg/Nm³ for cement plants by CPCB (effect from 01.04.2017), upgradation projects are made for some of the air pollution control equipments of cement plant and presently operating the plant with less than 30 mg/Nm³ of PM emissions level.
- The particulate emission norm of 20 mg/Nm³ is defined for our cement plant Line – III.

4. CPCB will evolve load based standards by June 2004.

As per the latest load based standard of 0.125 kg/tonne of clinker (particulate matter from raw mill, kiln and pre-calciner system put together) for cement plants by CPCB (effect from 01.04.2017), upgradation projects are made for some of the air pollution control equipments of cement plant.

5. CPCB and NCBM will evolve SO₂ and NO_x emission standards by June 2004.

The new standards are formulated recently, as follows:

- As our pyritic sulphur in limestone is less than 0.25%, our SO₂ standard for Kiln – I, II & III is 100 mg/Nm³. The sulphur content is absorbed in clinker and the emission levels are well within the limit.
- NO_x standards are 600 mg/Nm³ for Kiln – I & III and 800 mg/Nm³ for Kiln – II respectively. To meet the same, low NO_x burners and low NO_x calciners are installed for 3 Nos. of Kiln circuits.

6. Control fugitive emissions from all the raw material and products storage and transfer points by December 2003. The feasibility for the control of fugitive emissions from

limestone and coal storage areas will be decided by the NTF. The NTF shall submit its recommendations within three months.

- Installed unit bag filters in all conveyor transfer points.
 - Installed closed conveyors to transport raw materials to avoid fugitive emissions.
 - Operating pneumatic systems to convey fly ash to silos and for extraction systems.
 - Provided water sprinklers in the raw material yards and roads.
 - Operating 2 Nos. of road sweepers and 2 Nos. of industrial vacuum cleaners for cleaning the concrete roads and floors.
7. *CPCB, NCBM, BIS and Oil refineries will jointly prepare the policy on use of pet coke as fuel by July 2003.*

As per SO 3518(E) dated 23.11.2016 and its amendments thereof, pet coke is permitted to use as feedstock for cement plant. Pet coke is being used accordingly in cement plant.

8. *NTF will decide feasible unit operations / sections for installation of continuous monitoring equipment. The industry will install the continuous monitoring systems (CMS) by December 2003.*

Complied. 13 Nos. of online stack monitors are installed and online data is being transmitted to APPCB & CPCB websites.

9. *Tripping in Kiln ESP to be minimize by July 2003.*

Not applicable as no ESPs are installed for Kiln exhaust gases emitting circuits.

10. *Industries will submit the target date to enhance utilization of waste materials.*

Waste material from other industries like fly ash, gypsum, slag and pet coke are being used in our plant.

11. *NCBM will carry out a study on hazardous waste utilization in cement kiln by December 2003.*

Utilizing the hazardous wastes from other industries in cement kilns, which are procured through Andhra Pradesh Environment Management Corporation Limited (APEMCL), in our cement kilns.

12. *Cement industry will carry out feasibility study and submit target date to CPCB for cogeneration of power by July 2003.*

Being complied:

- The kiln exhaust gases are utilized for drying of raw materials at raw mill & coal mill grinding circuits. Cooler vent gases are utilized for cement grinding section.
- Waste Heat Recovery Boilers connected to Cement Plant Lines – I, II & III are in operation to produce 27 MW power.

THE RAMCO CEMENTS LIMITED, KSR NAGAR
THERMAL POWER PLANT - EFFLUENT TREATMENT PLANT OUTLET QUALITY DATA
PERIOD - APRIL 2024 TO SEPTEMBER 2024

S. No	Parameter	Unit	Month						Range / Average	Norm
			Apr-24	May-24	Jun-24	Jul-24	Aug-24	Sep-24		
1	p ^H		7.88	7.76	7.81	7.92	7.87	7.91	7.76 - 7.92	5.5 - 9.0
2	Total Dissolved Solids	mg/L	978	963	998	936	948	956	960.20	2100
3	Total Suspended Solids	mg/L	45.3	46.8	48.3	49.6	48.3	49.3	48.46	100
4	Chemical Oxygen Demand	mg/L	67.2	68.9	69.3	68.4	69.2	68.6	68.88	250
5	BOD (for 3 days at 27 °C)	mg/L	22.1	23.6	25.1	24.3	23.6	22.9	23.90	100
6	Oil & Grease	mg/L	1.2	1.4	1.8	1.6	1.4	1.2	1.48	10

THE RAMCO CEMENTS LIMITED, KSR NAGAR
AUTO GARAGE OIL & GREASE TRAP OUTLET WATER QUALITY DATA
PERIOD - APRIL 2024 TO SEPTEMBER 2024

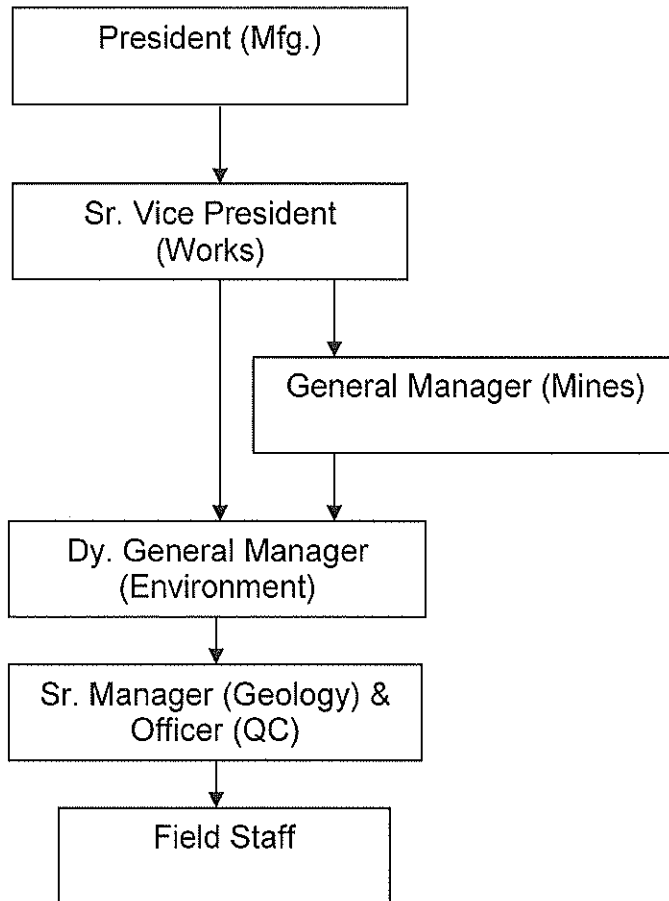
S. No	Parameter	Unit	Month						Range / Average	Norm
			Apr-24	May-24	Jun-24	Jul-24	Aug-24	Sep-24		
1	p ^H		7.88	7.79	7.83	7.98	7.48	7.52	7.52 - 7.98	5.5 - 9.0
2	Total Dissolved Solids	mg/L	823	856	891	978	952	911	902	2100
3	Total Suspended Solids	mg/L	70.6	73.6	75.3	70.6	73.6	70.2	72.3	100
4	Chemical Oxygen Demand	mg/L	123	131	148	139	126	118	131	250
5	BOD (for 3 days at 27 °C)	mg/L	43.9	45.2	42.3	40.6	42.3	43.6	42.98	100
6	Oil & Grease	mg/L	2.4	2.8	2.2	1.3	1.4	1.7	1.97	10

The Ramco Cements Limited, Kumarasamy Raja Nagar				
Online Effluent Monitoring Data - Thermal Power Plant Effluent Treatment Plant				
Period: April 2024 to September 2024				
SI No	Month	TPP NEUTRALIZATION PIT - pH Value	TPP NEUTRALIZATION PIT - TSS (mg/l)	TPP NEUTRALIZATION PIT - Temperature (°C)
1	Apr-24	8.29	36.21	33.05
2	May-24	8.28	35.94	32.65
3	Jun-24	8.24	36.5	31.39
4	Jul-24	7.84	32.95	29.14
5	Aug-24	8.13	35.22	29.9
6	Sep-24	8.43	33.7	29.68
7	Maximum Value	8.43	36.5	33.05
8	Minimum Value	7.84	32.95	29.14

THE RAMCO CEMENTS LIMITED, KSR NAGAR
SEWAGE TREATMENT PLANT OUTLET QUALITY DATA
PERIOD - APRIL 2024 TO SEPTEMBER 2024

S. No	Parameter	Unit	Month						Range / Average	Norm
			Apr-24	May-24	Jun-24	Jul-24	Aug-24	Sep-24		
1	p ^H		7.89	7.91	7.87	7.79	7.87	7.96	7.79 - 7.96	5.5 - 9.0
2	Total Dissolved Solids	mg/L	739	478	753	716	723	758	694.50	2100
3	Total Suspended Solids	mg/L	23.6	25.1	26.2	25.3	26.2	28.3	25.78	100
4	Chemical Oxygen Demand	mg/L	37.2	36.9	37.3	36.2	38.2	39.6	37.57	250
5	BOD (for 3 days at 27 °C)	mg/L	8.9	8.7	8.9	8.7	8.9	8.2	8.72	100
6	Oil & Grease	mg/L	1.0	1.6	1.8	2.2	2.1	2.0	1.78	10

**THE RAMCO CEMENTS LIMITED, KSR NAGAR
ORGANIZATIONAL CHART OF ENVIRONMENTAL CELL**



THE RAMCO CEMENTS LIMITED, KSR NAGAR
MINE DISCHARGE WATER QUALITY DATA
PERIOD - APRIL 2024 TO SEPTEMBER 2024

S. No	Parameter	Unit	Month						Limits
			Apr-24	May-24	Jun-24	Jul-24	Aug-24	Sep-24	
JAYANTHIPURAM LIMESTONE MINE (NORTH BAND)									
1	p ^H		7.84	8.03	8.08	8.13	8.29	8.37	5.5 - 9.0
2	Total Suspended Solids	mg/L	76.2	81.6	83.6	85.0	88.3	92.6	100
3	Total Dissolved Solids	mg/L	690	720	789	796	829	831	2100
4	Chlorides (as Cl)	mg/L	274	302	352	348	351	342	1000
5	Sulphates (as SO ₄)	mg/L	85.1	93.8	95.3	96.0	98.3	92.6	1000
6	BOD (for 3 days at 27 °C)	mg/L	< 4.0	< 4.0	< 4.0	< 4.0	< 4.0	< 4.0	30
7	Chemical Oxygen Demand	mg/L	26.20	28.60	29.70	28.30	29.60	28.30	250
8	Oil & Grease	mg/L	< 1.0	< 1.0	< 1.0	< 1.0	< 1.0	< 1.0	10
9	Iron (as Fe)	mg/L	0.61	0.74	0.88	0.79	0.83	0.81	3.0
10	Fluoride (as F)	mg/L	0.68	0.83	0.96	0.91	0.94	0.91	2.0
JAYANTHIPURAM LIMESTONE MINE (SOUTH BAND)									
1	p ^H		7.88	7.98	7.78	7.84	7.91	7.87	5.5 - 9.0
2	Total Suspended Solids	mg/L	65.3	66.9	67.3	69.6	73.8	72.6	100
3	Total Dissolved Solids	mg/L	792	769	812	896	852	841	2100
4	Chlorides (as Cl)	mg/L	151	158	163	171	166	160	1000
5	Sulphates (as SO ₄)	mg/L	68.3	69.2	68.1	69.7	65.3	62.3	1000
6	BOD (for 3 days at 27 °C)	mg/L	< 4.0	< 4.0	< 4.0	< 4.0	< 4.0	< 4.0	30
7	Chemical Oxygen Demand	mg/L	18.20	19.30	18.60	19.20	18.20	19.10	250
8	Oil & Grease	mg/L	< 1.0	< 1.0	< 1.0	< 1.0	< 1.0	< 1.0	10
9	Iron (as Fe)	mg/L	0.51	0.48	0.54	0.48	0.53	0.57	3.0
10	Fluoride (as F)	mg/L	0.49	0.53	0.59	0.61	0.68	0.73	2.0
RAVIRALA LIMESTONE MINE (RF)									
1	p ^H		7.63	7.78	7.81	7.92	7.88	7.79	5.5 - 9.0
2	Total Suspended Solids	mg/L	58.90	61.2	65.3	69.6	67.3	62.6	100
3	Total Dissolved Solids	mg/L	812	839	892	923	912	901	2100
4	Chlorides (as Cl)	mg/L	283	296	326	341	329	313	1000
5	Sulphates (as SO ₄)	mg/L	54.6	56.3	59.6	62.3	63.5	62.0	1000
6	BOD (for 3 days at 27 °C)	mg/L	< 4.0	< 4.0	< 4.0	< 4.0	< 4.0	< 4.0	30
7	Chemical Oxygen Demand	mg/L	19.10	20.60	22.80	28.20	29.10	28.20	250
8	Oil & Grease	mg/L	< 1.0	< 1.0	< 1.0	< 1.0	< 1.0	< 1.0	10
9	Iron (as Fe)	mg/L	0.74	0.71	0.89	0.93	0.78	0.71	3.0
10	Fluoride (as F)	mg/L	0.81	0.79	0.86	0.91	0.85	0.89	2.0

THE RAMCO CEMENTS LTD., KSR NAGAR
 DETAILS OF RAIN WATER HARVESTING PITS

S. No.	LOCATION	TO ACCOMMODATE	PIT NUMBERING	No. OF PITS	ROOF TOP AREAES (m ²)	PAVED AREA (m ²)	UNPAVED AREA (m ²)	PIT DIMENSIONS		LATITUDE	LONGITUDE
								LENGTH, m	WIDTH, m		
I. COLONY AREA											
1	C+ Qtrs buildings(C+1 -C+8)	Building roof top & Open yard	10	4	1200			3.45	1.5	16°52'26.55" N	80°07'45.85" E
			11					3.45	1.5	16°52'24.84" N	80°07'45.61" E
			12					3.45	1.5	16°52'25.05" N	80°07'44.10" E
			13					3.45	1.5	16°52'28.86" N	80°07'44.32" E
2	New school building	Building roof top & Open yard	1	4	3075			3.2	1.6	16°52'33.29" N	80°07'48.71" E
			2					3.1	1.8	16°52'32.42" N	80°07'46.66" E
			3					3.3	2.7	16°52'30.19" N	80°07'49.25" E
			4					2.2	3.2	16°52'28.98" N	80°07'47.78" E
3	Occupational Health Centre	Building roof water	6	2	200			3.3	1.7	16°52'28.03" N	80°07'39.85" E
			7					3.1	2.2	16°52'29.01" N	80°07'39.94" E
4	New Administration building	Building roof top & Open yard	9	1	540			3.2	2.4	16°52'30.10" N	80°07'35.84" E
5	Reading room	Building roof top water	8	1	120			1.1	1.8	16°52'30.10" N	80°07'41.36" E
6	D40 area	D40 quarter open yard	23	1			500	2.3	2.3	16°52'17.48" N	80°07'34.77" E
7	B Type quarter area (near B2 1 No. and B4 backside 1 No.)	School ground	21	2			1000	2.7	2.2	16°52'18.27" N	80°07'36.65" E
			22					1.7	1.7	16°52'20.10" N	80°07'36.08" E
8	C30	Open yard	15	1			200	2.3	2.5	16°52'26.13" N	80°07'43.14" E
9	Near Volley Ball ground	East of play ground	16	1		200		3.8	2	16°52'24.58" N	80°07'41.27" E
10	Near culvert @ Cricket ground	Open land near C ground	5	1			3000	3.4	2.7	16°52'32.07" N	80°07'44.40" E
11	Bachelor hostel area	Rain water collection pit through natural ground	14	2		550		2.1	2.3	16°52'26.75" N	80°07'31.59" E
			20					1.7	2.8	16°52'25.34" N	80°07'31.05" E
12	CMD guest house area	Building roof top & Open yard	17	3	1000			1.5	1.5	16°52'24.0" N	80°07'44.43" E
			18					0.6	0.9	16°52'23.71" N	80°07'43.52" E
			19					0.7	0.7	16°52'23.56" N	80°07'44.53" E
13	D - 1 block Apartment	D41 - D44 block roof top and open land	39	1	200			3	1.6	16°52'16.74" N	80°07'33.50" E
14	D - 2 block Apartment	D45 - D48 block roof top and open land	40	1	200			3.4	2.1	16°52'16.59" N	80°07'32.04" E
15	D - 3 block Apartment	D49 - D52 block roof top and open land	41	1	200			3.3	1.7	16°52'16.88" N	80°07'32.15" E
16	D - 4 block Apartment	D53 - D56 block roof top and open land	42	1	200			2.6	1.8	16°52'16.55" N	80°07'33.28" E
17	D - 5 block Apartment	D57- D60 block roof top and open land	43	1	200			2.8	1.8	16°52'16.41" N	80°07'34.34" E
18	D - 6 block Apartment	D61 - D64 block roof top and open land	44	1	200			2	2	16°52'18.75" N	80°07'32.10" E
19	D - 7 block Apartment	D64 - D68 block roof top and open land	45	1	200			2.5	2	16°52'18.48" N	80°07'33.31" E
20	E - 1 Block Apartment	E41 - E52 block roof top and open land	27	2	295			3.3	1.7	16°52'20.92" N	80°07'36.66" E
			28					3.2	1.6	16°52'19.92" N	80°07'36.12" E
21	E - 2 Block Apartment	E53 - E64 block roof top and open land	25	2	295			3.3	2.1	16°52'22.31" N	80°07'36.97" E
			26					3.3	2.1	16°52'21.23" N	80°07'36.77" E
22	F - 1 Block Apartment	F75 - F86 block roof top and open land	29	2	293			3	2	16°52'18.04" N	80°07'30.41" E
			30					3.4	2.2	16°52'19.35" N	80°07'30.39" E
23	F - 2 Block Apartment	F87 - F98 block roof top and open land	31	2	293			3	2.1	16°52'16.38" N	80°07'30.18" E
			32					3	2.1	16°52'17.76" N	80°07'30.27" E
24	F - 3 Block Apartment	F99 - F110 block roof top and open land	33	2	293			3.3	2.3	16°52'16.53" N	80°07'28.64" E
			34					3	2.1	16°52'17.75" N	80°07'28.85" E
25	F - 4 Block Apartment	F111 - F122 block roof top and open land	35	2	293			2.9	1.3	16°52'18.33" N	80°07'28.98" E
			36					2.6	1.8	16°52'19.53" N	80°07'28.99" E
26	F - 5 Block Apartment	F123 - F134block roof top and open land	37	2	293			2.9	1.3	16°52'19.96" N	80°07'29.10" E
			38					2.4	1.5	16°52'21.09" N	80°07'29.33" E
27	STP Area	Rain water collection pit through natural ground	46	1		400	1000	1.5	1.5	16°52'20.61" N	80°07'34.85" E
28	C-Type quarters area	Rain water collection pit through natural ground	47	1			500	2.8	2.7	16°52'22.97" N	80°07'39.48" E
29	C-18 Quarter backside	Rain water collection pit through natural ground	48	1			1000	2.5	2.5	16°52'22.06" N	80°07'40.37" E
30	E3& E4 Block Apartments	Roof top and open land	49	1	305			1.2	1.3	16°52'23.53" N	80°07'30.43" E
COLONY TOTAL				48							
II. PLANT AREA											
31	CCR	Roof top and open land	1	1	1100			3	2	16°52'33.16" N	80°07'19.21" E
32	Mines office	Roof top and open land	2	2	350			1.4	1.4	16°52'21.07" N	80°07'11.11" E
			3					1.5	1.5	16°52'21.58" N	80°07'11.82" E
33	Thermal Power Plant area	Cooling tower building surrounding surface water	4	1				1.5	1.5	16°52'26.34" N	80°07'11.11" E
PLANT TOTAL				4							
Total				52	11345	1150	7200				