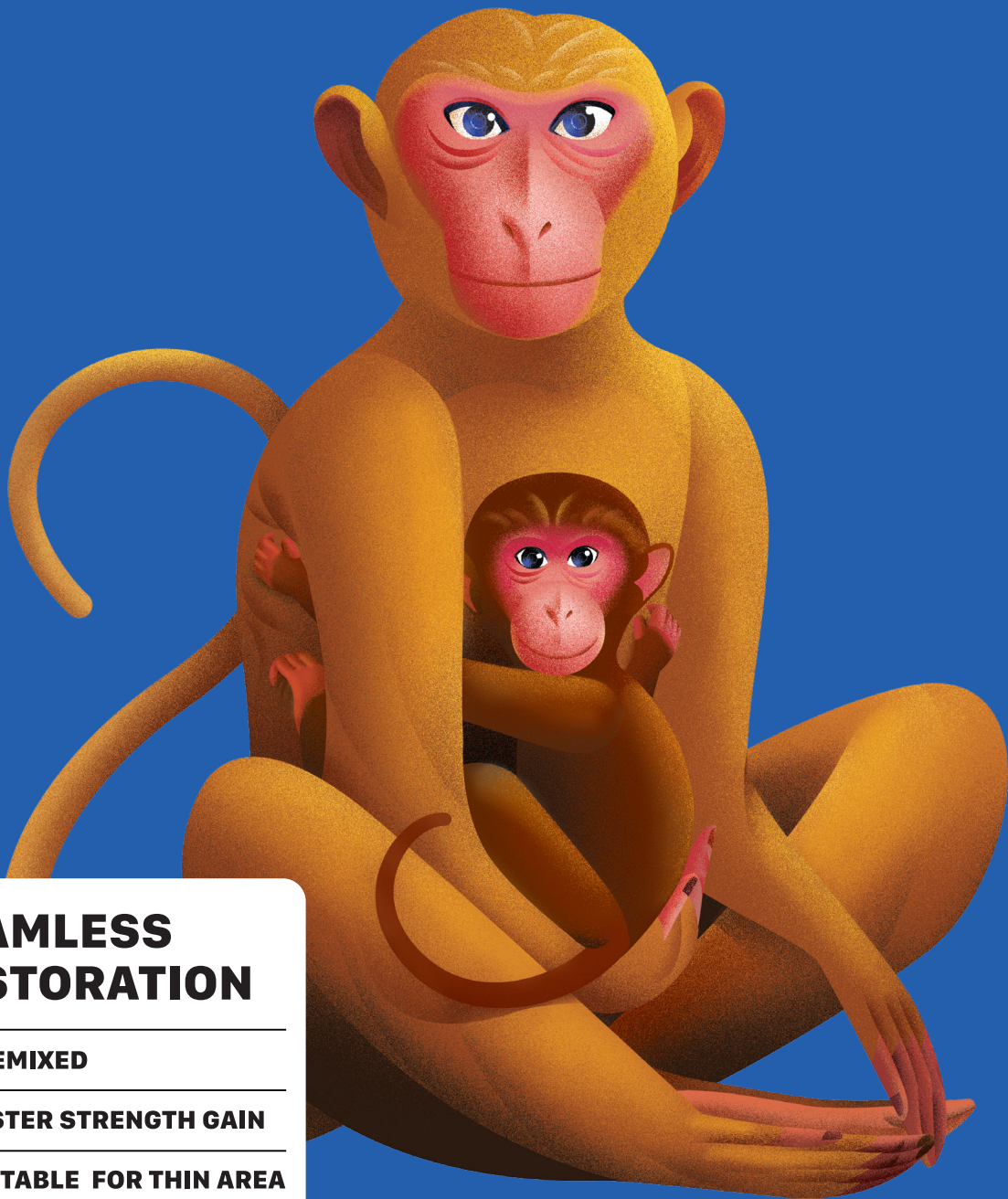


RAMCO

# HARD WORKER



**MICRO CONCRETE** HW401



## SEAMLESS RESTORATION

★ PREMIXED

★ FASTER STRENGTH GAIN

★ SUITABLE FOR THIN AREA

25KG

## Why HW Micro Concrete?

### SEAMLESS RESTORATION

Where repairs by structural wrapping and jacketing is the only option for concrete, HW Micro Concrete steps in with certainty. Its high strength, self-compacting mix flows into tight spaces and holds its shape without vibration or layering. Just add water, mix and pour. It bonds with old concrete, builds strength fast for rapid repairs that don't just fill thin areas, but restores trust.

### PREMIXED

Just add 12-14% water by weight to the pre-blended dry mix. It is ready for application.

### FASTER STRENGTH GAIN

When repair speed matters, strength can't wait. High early strength is a must for de-shuttering and handover.

### SUITABLE FOR THIN AREA

Ideal for jacketing and patch repair. Works in sections from 25 mm to 100 mm without weak zones.

### IDEAL FOR CRITICAL ZONES

Whether it is for jacketing columns, rebuilding corners or retrofitting beams, HW401 is engineered to flow easily into any formwork where load transfer and reinforcement are key.

### BUILT TO ADAPT

Built for varied strength needs, from small repairs to large scale projects.

Available Variants			
	M40	M60	M80
3 day	18 - 20	20 - 25	45 - 50
7 day	30 - 35	45 - 50	65 - 70
28 day	45 - 50	65 - 70	85 - 90

(Compressive Strength in MPa)



**SELF COMPACTING  
CONCRETE**



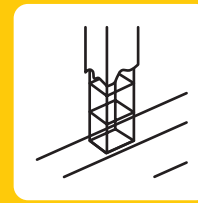
**REPAIRS HARD TO  
REACH SPOTS**



**SEGREGATION  
& BLEEDING**

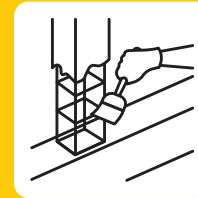


## APPLICATION



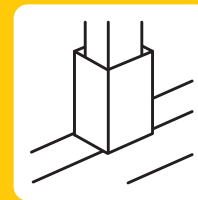
**Prepare the surface.**

Remove loose rust before application of HW401.



**Apply bonding agent.**

Use HW403 Bonding Agent Epoxy to enhance adhesion.



**Provide shuttering.**

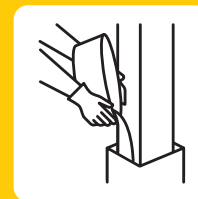


**Add HW to 12-14% water.**

Add 3 – 3.5 L of water for 25 kg of HW401



**Mix using a low-speed blender.**



**Pour the entire mix at one go. Cure with water for 7 days.**



**Scan to watch Application Video.**

**Toll Free No: 1800 202 5700**  
customer@ramcocements.co.in